

## Anti-LAIR1 antibody (21-70 Internal) (STJ97329)

STJ97329

### GENERAL INFORMATION

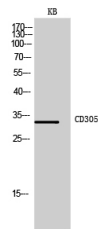
<b>Product Type</b>	Primary antibodies
<b>Short Description</b>	Rabbit polyclonal antibody anti-Leukocyte-Associated Immunoglobulin-Like Receptor 1 (21-70 Internal) is suitable for use in Western Blot and ELISA research applications.
<b>Applications</b>	WB, ELISA
<b>Host/Source</b>	Rabbit
<b>Reactivity</b>	Human, Rat, Mouse

### PRODUCT PROPERTIES

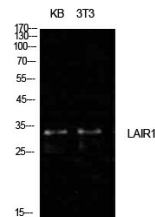
<b>Clonality</b>	Polyclonal
<b>Clone ID</b>	
<b>Concentration</b>	1 mg/mL
<b>Conjugation</b>	Unconjugated
<b>Purification</b>	The antibody was affinity-purified from rabbit anti-serum by affinity-chromatography.
<b>Dilution</b>	WB 1:500-1:2000
<b>Range</b>	ELISA 1:10000
<b>Formulation</b>	PBS, 50% Glycerol, 0.5% BSA and 0.02% Sodium Azide.
<b>Isotype</b>	IgG
<b>Storage</b>	Store at -20°C for up to 1 year from the date of receipt, and avoid repeat freeze-thaw cycles.
<b>Instruction</b>	

### TARGET INFORMATION

<b>Gene ID</b>	3903
<b>Gene Symbol</b>	LAIR1
<b>Uniprot ID</b>	LAIR1_HUMAN
<b>Immunogen</b>	The antiserum was produced against synthesized peptide derived from the Internal region of human LAIR1 at amino acid range 21-70
<b>Immunogen Region</b>	21-70 Internal
<b>Specificity</b>	LAIR1 polyclonal antibody (Leukocyte-Associated Immunoglobulin-Like Receptor 1) binds to endogenous Leukocyte-Associated Immunoglobulin-Like Receptor 1 at the amino acid region 21-70 Internal.
<b>Immunogen Sequence</b>	



Western blot analysis of KB cells using CD305 Polyclonal Antibody. Secondary antibody was diluted at 1:20000



Western blot analysis of KB, NIH-3T3 cells using CD305 Polyclonal Antibody. Secondary antibody was diluted at 1:20000