

Anti-CD209 antibody (261-310 Internal) (STJ97328)

STJ97328

GENERAL INFORMATION

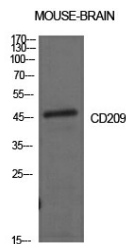
Product Type	Primary antibodies
Short Description	Rabbit polyclonal affinity-purified anti-Cd209 antigen (261-310 Internal) is suitable for use in Western Blot and ELISA research applications.
Applications	WB, ELISA
Host/Source	Rabbit
Reactivity	Human, Mouse, Rat

PRODUCT PROPERTIES

Clonality	Polyclonal
Clone ID	
Concentration	1 mg/mL
Conjugation	Unconjugated
Purification	The antibody was affinity-purified from rabbit anti-serum by affinity-chromatography.
Dilution Range	WB 1:500-1:2000 ELISA 1:10000
Formulation	PBS, 50% Glycerol, 0.5% BSA and 0.02% Sodium Azide.
Isotype	IgG
Storage Instruction	Store at -20°C for up to 1 year from the date of receipt, and avoid repeat freeze-thaw cycles.

TARGET INFORMATION

Gene ID	30835
Gene Symbol	CD209
Uniprot ID	CD209_HUMAN
Immunogen	Synthesized peptide derived from CD209 antigen at amino acid range: 261-310
Immunogen Region	261-310 Internal
Specificity	CD209 polyclonal antibody (Cd209 Antigen) binds to endogenous Cd209 Antigen at the amino acid region 261-310 Internal.
Immunogen Sequence	



Western blot analysis of mouse brain cells using CD209 Polyclonal Antibody. Antibody was diluted at 1:1000. Secondary antibody was diluted at 1:20000

This product is suitable for in-vitro studies under the RESEARCH USE ONLY [RUO] licence. This product must not be used as for diagnostic or other medical purposes.
St John's Laboratory Ltd, Knowledge Dock Business Centre, University Way, London, E16 2RD | Tel: 0208 223 3081