

Anti-ATP1B3 antibody (222-271 C-Term) (STJ97318)

STJ97318

GENERAL INFORMATION

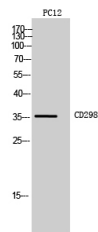
Product Type	Primary antibodies
Short Description	Rabbit polyclonal antibody anti-Sodium/Potassium-Transporting Atpase Subunit Beta-3 (222-271 C-Term) is suitable for use in Western Blot and ELISA research applications.
Applications	WB, ELISA
Host/Source	Rabbit
Reactivity	Human, Rat, Mouse

PRODUCT PROPERTIES

Clonality	Polyclonal
Clone ID	
Concentration	1 mg/mL
Conjugation	Unconjugated
Purification	The antibody was affinity-purified from rabbit anti-serum by affinity-chromatography.
Dilution	WB 1:500-1:2000
Range	ELISA 1:10000
Formulation	PBS, 50% Glycerol, 0.5% BSA and 0.02% Sodium Azide.
Isotype	IgG
Storage	Store at -20°C for up to 1 year from the date of receipt, and avoid repeat freeze-thaw cycles.
Instruction	

TARGET INFORMATION

Gene ID	483
Gene Symbol	ATP1B3
Uniprot ID	AT1B3_HUMAN
Immunogen	The antiserum was produced against synthesized peptide derived from the C-terminal region of human ATP1B3 at amino acid range 222-271
Immunogen Region	222-271 C-Term
Specificity	ATP1B3 polyclonal antibody (Sodium/Potassium-Transporting Atpase Subunit Beta-3) binds to endogenous Sodium/Potassium-Transporting Atpase Subunit Beta-3 at the amino acid region 222-271 C-Term.
Immunogen Sequence	



Western blot analysis of PC12, NIH-3T3 cells using CD298 Polyclonal Antibody. Secondary antibody was diluted at 1:20000