

Anti-IL13RA2 antibody (241-290 Internal) (STJ97311)

STJ97311

GENERAL INFORMATION

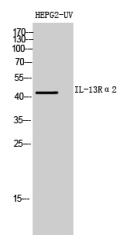
Product Type	Primary antibodies
Short Description	Rabbit polyclonal antibody anti-Interleukin-13 Receptor Subunit Alpha-2 (241-290 Internal) is suitable for use in Western Blot, Immunohistochemistry, Immunofluorescence and ELISA research applications.
Applications	WB, IHC-P, IF-P, ELISA
Host/Source	Rabbit
Reactivity	Human, Rat, Mouse

PRODUCT PROPERTIES

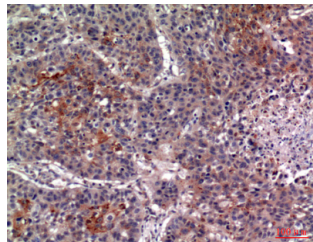
Clonality	Polyclonal
Clone ID	
Concentration	1 mg/mL
Conjugation	Unconjugated
Purification	The antibody was affinity-purified from rabbit anti-serum by affinity-chromatography.
Dilution Range	WB 1:500-1:2000 IHC 1:100-1:300 ELISA 1:10000
Formulation	PBS, 50% Glycerol, 0.5% BSA and 0.02% Sodium Azide.
Isotype	IgG
Storage Instruction	Store at -20°C for up to 1 year from the date of receipt, and avoid repeat freeze-thaw cycles.

TARGET INFORMATION

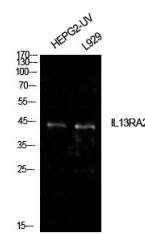
Gene ID	3598
Gene Symbol	IL13RA2
Uniprot ID	I13R2_HUMAN
Immunogen	Synthesized peptide derived from Interleukin-13 receptor subunit alpha-2 at amino acid range: 241-290
Immunogen Region	241-290 Internal
Specificity	IL13RA2 polyclonal antibody (Interleukin-13 Receptor Subunit Alpha-2) binds to endogenous Interleukin-13 Receptor Subunit Alpha-2 at the amino acid region 241-290 Internal.
Immunogen Sequence	



Western blot analysis of HEPG2-UV cells using IL-13R Alpha 2 Polyclonal Antibody diluted at 1: 500. Secondary antibody was diluted at 1:20000



Immunohistochemical analysis of paraffin-embedded human-lung, antibody was diluted at 1:100



Western blot analysis of HepG2 (UV), L929 cells using IL-13R Alpha 2 Polyclonal Antibody. Antibody was diluted at 1:500. Secondary antibody was diluted at 1:20000

This product is suitable for in-vitro studies under the RESEARCH USE ONLY [RUO] licence. This product must not be used as for diagnostic or other medical purposes.
St John's Laboratory Ltd, Knowledge Dock Business Centre, University Way, London, E16 2RD | Tel: 0208 223 3081