

Anti-IL9R antibody (201-250 Internal) (STJ97301)

STJ97301

GENERAL INFORMATION

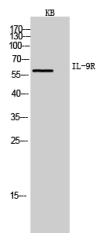
Product Type	Primary antibodies
Short Description	Rabbit polyclonal antibody anti-Interleukin-9 Receptor (201-250 Internal) is suitable for use in Western Blot and ELISA research applications.
Applications	WB, ELISA
Host/Source	Rabbit
Reactivity	Human, Rat, Mouse

PRODUCT PROPERTIES

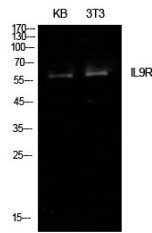
Clonality	Polyclonal
Clone ID	
Concentration	1 mg/mL
Conjugation	Unconjugated
Purification	The antibody was affinity-purified from rabbit anti-serum by affinity-chromatography.
Dilution Range	WB 1:500-1:2000 ELISA 1:10000
Formulation	PBS, 50% Glycerol, 0.5% BSA and 0.02% Sodium Azide.
Isotype	IgG
Storage Instruction	Store at -20°C for up to 1 year from the date of receipt, and avoid repeat freeze-thaw cycles.

TARGET INFORMATION

Gene ID	3581
Gene Symbol	IL9R
Uniprot ID	IL9R_HUMAN
Immunogen	The antiserum was produced against synthesized peptide derived from the Internal region of human IL9R at amino acid range 201-250
Immunogen Region	201-250 Internal
Specificity	IL9R polyclonal antibody (Interleukin-9 Receptor) binds to endogenous Interleukin-9 Receptor at the amino acid region 201-250 Internal.
Immunogen Sequence	



Western blot analysis of KB cells using IL-9R Polyclonal Antibody. Secondary antibody was diluted at 1:20000



Western blot analysis of KB, NIH-3T3 cells using IL-9R Polyclonal Antibody. Secondary antibody was diluted at 1:20000

This product is suitable for in-vitro studies under the RESEARCH USE ONLY [RUO] licence. This product must not be used as for diagnostic or other medical purposes.
St John's Laboratory Ltd, Knowledge Dock Business Centre, University Way, London, E16 2RD | Tel: 0208 223 3081