

Anti-LIFR antibody (390-470 Internal) (STJ97299)

STJ97299

GENERAL INFORMATION

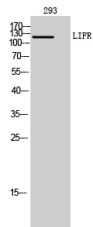
Product Type	Primary antibodies
Short Description	Rabbit polyclonal antibody anti-Leukemia Inhibitory Factor Receptor (390-470 Internal) is suitable for use in Western Blot and ELISA research applications.
Applications	WB, ELISA
Host/Source	Rabbit
Reactivity	Human, Rat, Mouse

PRODUCT PROPERTIES

Clonality	Polyclonal
Clone ID	
Concentration	1 mg/mL
Conjugation	Unconjugated
Purification	The antibody was affinity-purified from rabbit anti-serum by affinity-chromatography.
Dilution Range	WB 1:500-1:2000 ELISA 1:10000
Formulation	PBS, 50% Glycerol, 0.5% BSA and 0.02% Sodium Azide.
Isotype	IgG
Storage Instruction	Store at -20°C for up to 1 year from the date of receipt, and avoid repeat freeze-thaw cycles.

TARGET INFORMATION

Gene ID	3977
Gene Symbol	LIFR
Uniprot ID	LIFR_HUMAN
Immunogen	The antiserum was produced against synthesized peptide derived from the internal region of human LIFR at amino acid range 731-780
Immunogen Region	390-470 Internal
Specificity	LIFR polyclonal antibody (Leukemia Inhibitory Factor Receptor) binds to endogenous Leukemia Inhibitory Factor Receptor at the amino acid region 390-470 Internal.
Immunogen Sequence	



Western blot analysis of 293 cells using LIFR Polyclonal Antibody. Secondary antibody was diluted at 1:20000