

Anti-NECTIN2 antibody (151-200 Internal) (STJ97298)

STJ97298

GENERAL INFORMATION

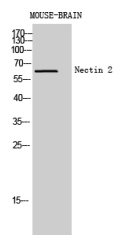
Product Type	Primary antibodies
Short Description	Rabbit polyclonal antibody anti-Nectin-2 (151-200 Internal) is suitable for use in Western Blot and ELISA research applications.
Applications	WB, ELISA
Host/Source	Rabbit
Reactivity	Human, Rat, Mouse

PRODUCT PROPERTIES

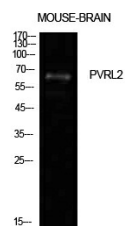
Clonality	Polyclonal
Clone ID	
Concentration	1 mg/mL
Conjugation	Unconjugated
Purification	The antibody was affinity-purified from rabbit anti-serum by affinity-chromatography.
Dilution Range	WB 1:500-1:2000 ELISA 1:10000
Formulation	PBS, 50% Glycerol, 0.5% BSA and 0.02% Sodium Azide.
Isotype	IgG
Storage Instruction	Store at -20°C for up to 1 year from the date of receipt, and avoid repeat freeze-thaw cycles.

TARGET INFORMATION

Gene ID	5819
Gene Symbol	NECTIN2
Uniprot ID	NECT2_HUMAN
Immunogen	Synthesized peptide derived from Poliovirus receptor-related protein 2 at amino acid range: 151-200
Immunogen Region	151-200 Internal
Specificity	NECTIN2 polyclonal antibody (Nectin-2) binds to endogenous Nectin-2 at the amino acid region 151-200 Internal.
Immunogen Sequence	



Western blot analysis of mouse brain cells using Nectin 2 Polyclonal Antibody diluted at 1: 500. Secondary antibody was diluted at 1:20000



Western blot analysis of mouse brain cells using Nectin 2 Polyclonal Antibody. Antibody was diluted at 1:500. Secondary antibody was diluted at 1:20000

This product is suitable for in-vitro studies under the RESEARCH USE ONLY [RUO] licence. This product must not be used as for diagnostic or other medical purposes.
St John's Laboratory Ltd, Knowledge Dock Business Centre, University Way, London, E16 2RD | Tel: 0208 223 3081