

Anti-SLC3A2 antibody (491-540 C-Term) (STJ97294)

STJ97294

GENERAL INFORMATION

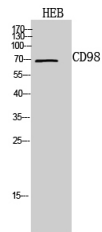
Product Type	Primary antibodies
Short Description	Rabbit polyclonal antibody anti-4f2 Cell-Surface antigen Heavy Chain (491-540 C-Term) is suitable for use in Western Blot and ELISA research applications.
Applications	WB, ELISA
Host/Source	Rabbit
Reactivity	Human, Mouse, Rat

PRODUCT PROPERTIES

Clonality	Polyclonal
Clone ID	
Concentration	1 mg/mL
Conjugation	Unconjugated
Purification	The antibody was affinity-purified from rabbit anti-serum by affinity-chromatography.
Dilution Range	WB 1:500-1:2000 ELISA 1:10000
Formulation	PBS, 50% Glycerol, 0.5% BSA and 0.02% Sodium Azide.
Isotype	IgG
Storage Instruction	Store at -20°C for up to 1 year from the date of receipt, and avoid repeat freeze-thaw cycles.

TARGET INFORMATION

Gene ID	6520
Gene Symbol	SLC3A2
Uniprot ID	4F2_HUMAN
Immunogen	The antiserum was produced against synthesized peptide derived from the C-terminal region of human SLC3A2 at amino acid range 491-540
Immunogen Region	491-540 C-Term
Specificity	SLC3A2 polyclonal antibody (4f2 Cell-Surface Antigen Heavy Chain) binds to endogenous 4f2 Cell-Surface Antigen Heavy Chain at the amino acid region 491-540 C-Term.
Immunogen Sequence	



Western blot analysis of HEB cells using CD98 Polyclonal Antibody. Secondary antibody was diluted at 1:20000