

Anti-CD96 antibody (291-340 Internal) (STJ97293)

STJ97293

GENERAL INFORMATION

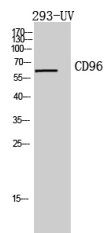
Product Type	Primary antibodies
Short Description	Rabbit polyclonal antibody anti-T-Cell Surface Protein Tactile (291-340 Internal) is suitable for use in Western Blot and ELISA research applications.
Applications	WB, ELISA
Host/Source	Rabbit
Reactivity	Human, Rat, Mouse

PRODUCT PROPERTIES

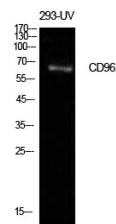
Clonality	Polyclonal
Clone ID	
Concentration	1 mg/mL
Conjugation	Unconjugated
Purification	The antibody was affinity-purified from rabbit anti-serum by affinity-chromatography.
Dilution Range	WB 1:500-1:2000 ELISA 1:10000
Formulation	PBS, 50% Glycerol, 0.5% BSA and 0.02% Sodium Azide.
Isotype	IgG
Storage	Store at -20°C for up to 1 year from the date of receipt, and avoid repeat freeze-thaw cycles.
Instruction	

TARGET INFORMATION

Gene ID	10225
Gene Symbol	CD96
Uniprot ID	TACT_HUMAN
Immunogen	The antiserum was produced against synthesized peptide derived from the Internal region of human CD96 at amino acid range 291-340
Immunogen Region	291-340 Internal
Specificity	CD96 polyclonal antibody (T-Cell Surface Protein Tactile) binds to endogenous T-Cell Surface Protein Tactile at the amino acid region 291-340 Internal.
Immunogen Sequence	



Western blot analysis of 293-UV cells using CD96 Polyclonal Antibody diluted at 1:500. Secondary antibody was diluted at 1:20000



Western blot analysis of 293-UV cells using CD96 Polyclonal Antibody. Antibody was diluted at 1:500. Secondary antibody was diluted at 1:20000