

Anti-CD93 antibody (191-240 Internal) (STJ97292)

STJ97292

GENERAL INFORMATION

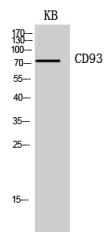
Product Type	Primary antibodies
Short Description	Rabbit polyclonal antibody anti-Complement Component C1q Receptor (191-240 Internal) is suitable for use in Western Blot and ELISA research applications.
Applications	WB, ELISA
Host/Source	Rabbit
Reactivity	Human, Rat, Mouse

PRODUCT PROPERTIES

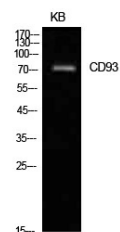
Clonality	Polyclonal
Clone ID	
Concentration	1 mg/mL
Conjugation	Unconjugated
Purification	The antibody was affinity-purified from rabbit anti-serum by affinity-chromatography.
Dilution Range	WB 1:500-1:2000 ELISA 1:10000
Formulation	PBS, 50% Glycerol, 0.5% BSA and 0.02% Sodium Azide.
Isotype	IgG
Storage	Store at -20°C for up to 1 year from the date of receipt, and avoid repeat freeze-thaw cycles.
Instruction	

TARGET INFORMATION

Gene ID	22918
Gene Symbol	CD93
Uniprot ID	C1QR1_HUMAN
Immunogen	The antiserum was produced against synthesized peptide derived from the Internal region of human CD93 at amino acid range 191-240
Immunogen Region	191-240 Internal
Specificity	CD93 polyclonal antibody (Complement Component C1q Receptor) binds to endogenous Complement Component C1q Receptor at the amino acid region 191-240 Internal.
Immunogen Sequence	



Western blot analysis of KB cells using CD93 Polyclonal Antibody. Secondary antibody was diluted at 1:20000



Western blot analysis of KB cells using CD93 Polyclonal Antibody. Secondary antibody was diluted at 1:20000

This product is suitable for in-vitro studies under the RESEARCH USE ONLY [RUO] licence. This product must not be used as for diagnostic or other medical purposes.
St John's Laboratory Ltd, Knowledge Dock Business Centre, University Way, London, E16 2RD | Tel: 0208 223 3081