

Anti-LILRB1 antibody (21-70 N-Term) (STJ97291)

STJ97291

GENERAL INFORMATION

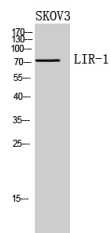
Product Type	Primary antibodies
Short Description	Rabbit polyclonal antibody anti-Leukocyte Immunoglobulin-Like Receptor Subfamily B Member 1 (21-70 N-Term) is suitable for use in Western Blot and ELISA research applications.
Applications	WB, ELISA
Host/Source	Rabbit
Reactivity	Human, Rat, Mouse

PRODUCT PROPERTIES

Clonality	Polyclonal
Clone ID	
Concentration	1 mg/mL
Conjugation	Unconjugated
Purification	The antibody was affinity-purified from rabbit anti-serum by affinity-chromatography.
Dilution	WB 1:500-1:2000
Range	ELISA 1:10000
Formulation	PBS, 50% Glycerol, 0.5% BSA and 0.02% Sodium Azide.
Isotype	IgG
Storage Instruction	Store at -20°C for up to 1 year from the date of receipt, and avoid repeat freeze-thaw cycles.

TARGET INFORMATION

Gene ID	10859
Gene Symbol	LILRB1
Uniprot ID	LIRB1_HUMAN
Immunogen	The antiserum was produced against synthesized peptide derived from the N-terminal region of human LILRB1 at amino acid range 21-70
Immunogen Region	21-70 N-Term
Specificity	LILRB1 polyclonal antibody (Leukocyte Immunoglobulin-Like Receptor Subfamily B Member 1) binds to endogenous Leukocyte Immunoglobulin-Like Receptor Subfamily B Member 1 at the amino acid region 21-70 N-Term.
Immunogen Sequence	



Western blot analysis of SKOV3 cells using LIR-1 Polyclonal Antibody. Secondary antibody was diluted at 1:20000