

Anti-LILRB2 antibody (121-170 Internal) (STJ97290)

STJ97290

GENERAL INFORMATION

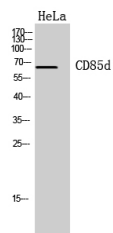
Product Type	Primary antibodies
Short Description	Rabbit polyclonal antibody anti-Leukocyte Immunoglobulin-Like Receptor Subfamily B Member 2 (121-170 Internal) is suitable for use in Western Blot and ELISA research applications.
Applications	WB, ELISA
Host/Source	Rabbit
Reactivity	Human, Rat, Mouse

PRODUCT PROPERTIES

Clonality	Polyclonal
Clone ID	
Concentration	1 mg/mL
Conjugation	Unconjugated
Purification	The antibody was affinity-purified from rabbit anti-serum by affinity-chromatography.
Dilution	WB 1:500-1:2000
Range	ELISA 1:10000
Formulation	PBS, 50% Glycerol, 0.5% BSA and 0.02% Sodium Azide.
Isotype	IgG
Storage Instruction	Store at -20°C for up to 1 year from the date of receipt, and avoid repeat freeze-thaw cycles.

TARGET INFORMATION

Gene ID	NA
Gene Symbol	LILRB2
Uniprot ID	LIRB2_HUMAN
Immunogen	The antiserum was produced against synthesized peptide derived from the Internal region of human LILRB2 at amino acid range 121-170
Immunogen Region	121-170 Internal
Specificity	LILRB2 polyclonal antibody (Leukocyte Immunoglobulin-Like Receptor Subfamily B Member 2) binds to endogenous Leukocyte Immunoglobulin-Like Receptor Subfamily B Member 2 at the amino acid region 121-170 Internal.
Immunogen Sequence	



Western blot analysis of HeLa cells using CD85d Polyclonal Antibody. Secondary antibody was diluted at 1:20000

This product is suitable for in-vitro studies under the RESEARCH USE ONLY [RUO] licence. This product must not be used as for diagnostic or other medical purposes.
 St John's Laboratory Ltd, Knowledge Dock Business Centre, University Way, London, E16 2RD | Tel: 0208 223 3081