

Anti-CD53 antibody (91-140 Internal) (STJ97286)

STJ97286

GENERAL INFORMATION

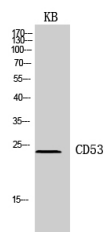
Product Type	Primary antibodies
Short Description	Rabbit polyclonal antibody anti-Leukocyte Surface antigen Cd53 (91-140 Internal) is suitable for use in Western Blot and ELISA research applications.
Applications	WB, ELISA
Host/Source	Rabbit
Reactivity	Human, Mouse, Rat

PRODUCT PROPERTIES

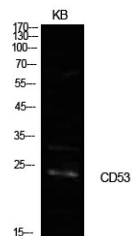
Clonality	Polyclonal
Clone ID	
Concentration	1 mg/mL
Conjugation	Unconjugated
Purification	The antibody was affinity-purified from rabbit anti-serum by affinity-chromatography.
Dilution Range	WB 1:500-1:2000 ELISA 1:10000
Formulation	PBS, 50% Glycerol, 0.5% BSA and 0.02% Sodium Azide.
Isotype	IgG
Storage	Store at -20°C for up to 1 year from the date of receipt, and avoid repeat freeze-thaw cycles.
Instruction	

TARGET INFORMATION

Gene ID	963
Gene Symbol	CD53
Uniprot ID	CD53_HUMAN
Immunogen	The antiserum was produced against synthesized peptide derived from the Internal region of human CD53 at amino acid range 91-140
Immunogen Region	91-140 Internal
Specificity	CD53 polyclonal antibody (Leukocyte Surface Antigen Cd53) binds to endogenous Leukocyte Surface Antigen Cd53 at the amino acid region 91-140 Internal.
Immunogen Sequence	



Western blot analysis of KB cells using CD53 Polyclonal Antibody. Secondary antibody was diluted at 1:20000



Western blot analysis of KB cells using CD53 Polyclonal Antibody. Secondary antibody was diluted at 1:20000

This product is suitable for in-vitro studies under the RESEARCH USE ONLY [RUO] licence. This product must not be used as for diagnostic or other medical purposes.
St John's Laboratory Ltd, Knowledge Dock Business Centre, University Way, London, E16 2RD | Tel: 0208 223 3081