

Anti-ITGA6 antibody (901-950 Internal) (STJ97285)

STJ97285

GENERAL INFORMATION

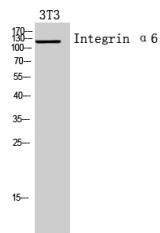
Product Type	Primary antibodies
Short Description	Rabbit polyclonal antibody anti-Integrin Alpha-6 (901-950 Internal) is suitable for use in Western Blot and ELISA research applications.
Applications	WB, ELISA
Host/Source	Rabbit
Reactivity	Human, Mouse, Rat

PRODUCT PROPERTIES

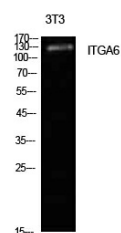
Clonality	Polyclonal
Clone ID	
Concentration	1 mg/mL
Conjugation	Unconjugated
Purification	The antibody was affinity-purified from rabbit anti-serum by affinity-chromatography.
Dilution Range	WB 1:500-1:2000 ELISA 1:10000
Formulation	PBS, 50% Glycerol, 0.5% BSA and 0.02% Sodium Azide.
Isotype	IgG
Storage Instruction	Store at -20°C for up to 1 year from the date of receipt, and avoid repeat freeze-thaw cycles.

TARGET INFORMATION

Gene ID	3655
Gene Symbol	ITGA6
Uniprot ID	ITA6_HUMAN
Immunogen	The antiserum was produced against synthesized peptide derived from the Internal region of human ITGA6 at amino acid range 901-950
Immunogen Region	901-950 Internal
Specificity	ITGA6 polyclonal antibody (Integrin Alpha-6) binds to endogenous Integrin Alpha-6 at the amino acid region 901-950 Internal.
Immunogen Sequence	



Western blot analysis of 3T3 cells using Integrin Alpha 6 Polyclonal Antibody. Secondary antibody was diluted at 1:20000



Western blot analysis of NIH-3T3 cells using Integrin Alpha 6 Polyclonal Antibody. Secondary antibody was diluted at 1:20000

This product is suitable for in-vitro studies under the RESEARCH USE ONLY [RUO] licence. This product must not be used as for diagnostic or other medical purposes.
St John's Laboratory Ltd, Knowledge Dock Business Centre, University Way, London, E16 2RD | Tel: 0208 223 3081