

Anti-ITGA5 antibody (561-610 Internal) (STJ97284)

STJ97284

GENERAL INFORMATION

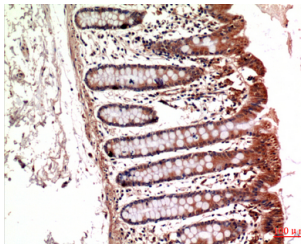
Product Type	Primary antibodies
Short Description	Rabbit polyclonal antibody anti-Integrin Alpha-5 (561-610 Internal) is suitable for use in Western Blot, Immunohistochemistry, Immunofluorescence and ELISA research applications.
Applications	WB, IHC-P, IF-P, ELISA
Host/Source	Rabbit
Reactivity	Human, Mouse, Rat

PRODUCT PROPERTIES

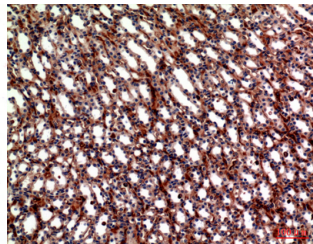
Clonality	Polyclonal
Clone ID	
Concentration	1 mg/mL
Conjugation	Unconjugated
Purification	The antibody was affinity-purified from rabbit anti-serum by affinity-chromatography.
Dilution Range	WB 1:500-1:2000 IHC 1:100-1:300 ELISA 1:10000
Formulation	PBS, 50% Glycerol, 0.5% BSA and 0.02% Sodium Azide.
Isotype	IgG
Storage Instruction	Store at -20°C for up to 1 year from the date of receipt, and avoid repeat freeze-thaw cycles.

TARGET INFORMATION

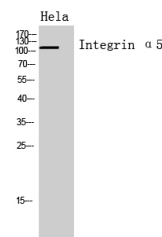
Gene ID	3678
Gene Symbol	ITGA5
Uniprot ID	ITA5_HUMAN
Immunogen	The antiserum was produced against synthesized peptide derived from the Internal region of human ITGA5 at amino acid range 561-610
Immunogen Region	561-610 Internal
Specificity	ITGA5 polyclonal antibody (Integrin Alpha-5) binds to endogenous Integrin Alpha-5 at the amino acid region 561-610 Internal.
Immunogen Sequence	



Immunohistochemical analysis of paraffin-embedded mouse-kidney, antibody was diluted at 1:100



Immunohistochemical analysis of paraffin-embedded mouse-kidney, antibody was diluted at 1:100



Western blot analysis of HeLa cells using Integrin Alpha 5 Polyclonal Antibody. Secondary antibody was diluted at 1:20000