

Anti-ITGA2 antibody (1081-1130 C-Term) (STJ97283)

STJ97283

GENERAL INFORMATION

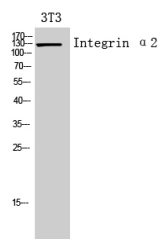
Product Type	Primary antibodies
Short Description	Rabbit polyclonal antibody anti-Integrin Alpha-2 (1081-1130 C-Term) is suitable for use in Western Blot, Immunohistochemistry, Immunofluorescence and ELISA research applications.
Applications	WB, IHC-P, IF-P, ELISA
Host/Source	Rabbit
Reactivity	Human, Mouse, Rat

PRODUCT PROPERTIES

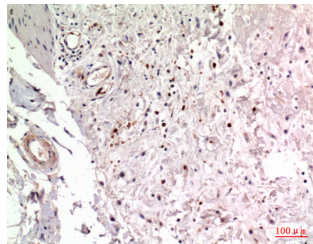
Clonality	Polyclonal
Clone ID	
Concentration	1 mg/mL
Conjugation	Unconjugated
Purification	The antibody was affinity-purified from rabbit anti-serum by affinity-chromatography.
Dilution Range	WB 1:500-1:2000 IHC 1:100-1:300 ELISA 1:10000
Formulation	PBS, 50% Glycerol, 0.5% BSA and 0.02% Sodium Azide.
Isotype	IgG
Storage Instruction	Store at -20°C for up to 1 year from the date of receipt, and avoid repeat freeze-thaw cycles.

TARGET INFORMATION

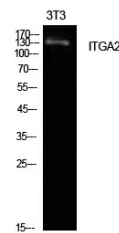
Gene ID	3673
Gene Symbol	ITGA2
Uniprot ID	ITA2_HUMAN
Immunogen	The antiserum was produced against synthesized peptide derived from the C-terminal region of human ITGA2 at amino acid range 1081-1130
Immunogen Region	1081-1130 C-Term
Specificity	ITGA2 polyclonal antibody (Integrin Alpha-2) binds to endogenous Integrin Alpha-2 at the amino acid region 1081-1130 C-Term.
Immunogen Sequence	



Western blot analysis of 3T3 cells using Integrin Alpha 2 Polyclonal Antibody. Secondary antibody was diluted at 1:20000



Immunohistochemical analysis of paraffin-embedded human colon, antibody was diluted at 1:100



Western blot analysis of NIH-3T3 cells using Integrin Alpha 2 Polyclonal Antibody. Secondary antibody was diluted at 1:20000