

Anti-STRA8 antibody (151-200 Internal) (STJ97252)

STJ97252

GENERAL INFORMATION

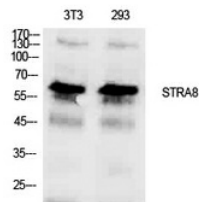
Product Type	Primary antibodies
Short Description	Rabbit polyclonal antibody anti-Stimulated By Retinoic Acid Gene 8 Protein Homolog (151-200 Internal) is suitable for use in Western Blot and ELISA research applications.
Applications	WB, ELISA
Host/Source	Rabbit
Reactivity	Human, Rat, Mouse

PRODUCT PROPERTIES

Clonality	Polyclonal
Clone ID	
Concentration	1 mg/mL
Conjugation	Unconjugated
Purification	The antibody was affinity-purified from rabbit anti-serum by affinity-chromatography.
Dilution	WB 1:500-1:2000
Range	ELISA 1:10000
Formulation	PBS, 50% Glycerol, 0.5% BSA and 0.02% Sodium Azide.
Isotype	IgG
Storage	Store at -20°C for up to 1 year from the date of receipt, and avoid repeat freeze-thaw cycles.
Instruction	

TARGET INFORMATION

Gene ID	346673
Gene Symbol	STRA8
Uniprot ID	STRA8_HUMAN
Immunogen	The antiserum was produced against synthesized peptide derived from the Internal region of human STRA8 at amino acid range 151-200
Immunogen Region	151-200 Internal
Specificity	STRA8 polyclonal antibody (Stimulated By Retinoic Acid Gene 8 Protein Homolog) binds to endogenous Stimulated By Retinoic Acid Gene 8 Protein Homolog at the amino acid region 151-200 Internal.
Immunogen Sequence	



Western blot analysis of NIH-3T3, 293 cells using Stra8 Polyclonal Antibody. Antibody was diluted at 1:1000. Secondary antibody was diluted at 1:20000