

Anti-CHRNA1 antibody (171-220 Internal) (STJ97250)

STJ97250

GENERAL INFORMATION

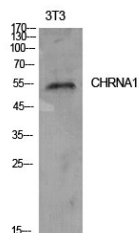
Product Type	Primary antibodies
Short Description	Rabbit polyclonal antibody anti-Acetylcholine Receptor Subunit Alpha (171-220 Internal) is suitable for use in Western Blot and ELISA research applications.
Applications	WB, ELISA
Host/Source	Rabbit
Reactivity	Human, Mouse, Rat

PRODUCT PROPERTIES

Clonality	Polyclonal
Clone ID	
Concentration	1 mg/mL
Conjugation	Unconjugated
Purification	The antibody was affinity-purified from rabbit anti-serum by affinity-chromatography.
Dilution Range	WB 1:500-1:2000 ELISA 1:10000
Formulation	PBS, 50% Glycerol, 0.5% BSA and 0.02% Sodium Azide.
Isotype	IgG
Storage	Store at -20°C for up to 1 year from the date of receipt, and avoid repeat freeze-thaw cycles.
Instruction	

TARGET INFORMATION

Gene ID	1134
Gene Symbol	CHRNA1
Uniprot ID	ACHA_HUMAN
Immunogen	The antiserum was produced against synthesized peptide derived from the Internal region of human CHRNA1 at amino acid range 171-220
Immunogen Region	171-220 Internal
Specificity	CHRNA1 polyclonal antibody (Acetylcholine Receptor Subunit Alpha) binds to endogenous Acetylcholine Receptor Subunit Alpha at the amino acid region 171-220 Internal.
Immunogen Sequence	



Western blot analysis of NIH-3T3 cells using AChR Alpha 1 Polyclonal Antibody. Secondary antibody was diluted at 1:20000