

Anti-HMG-1 (Acetyl K12) antibody (STJ97227)

STJ97227

GENERAL INFORMATION

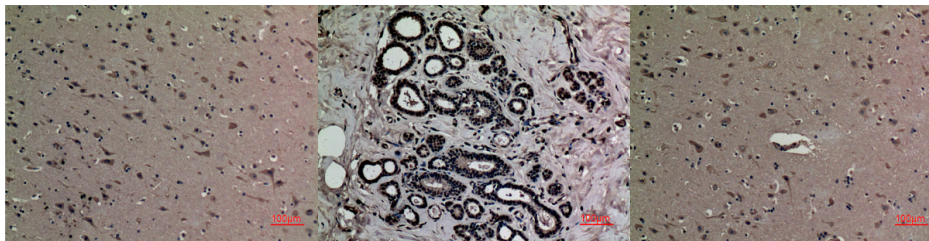
Product Type	Primary antibodies
Short Description	Rabbit polyclonal anti-HMG-1 (Acetyl K12) antibody is suitable for use in Western Blot, Immunohistochemistry and ELISA.
Background	
Applications	WB, IHC-P, ELISA
Host/Source	Rabbit
Reactivity	Human, Mouse, Rat

PRODUCT PROPERTIES

Clonality	Polyclonal
Clone ID	
Concentration	1 mg/ml
Conjugation	Unconjugated
Purification	The antibody was affinity-purified from rabbit antiserum by affinity-chromatography using an epitope-specific immunogen.
Dilution Range	WB 1:500-1:2000 IHC-p 1:100-300 ELISA 1:10000
Formulation	Liquid in PBS containing 50% glycerol, 0.5% BSA and 0.02% sodium azide.
Isotype	IgG
Storage Instruction	Store at -20°C, and avoid repeat freeze-thaw cycles.

TARGET INFORMATION

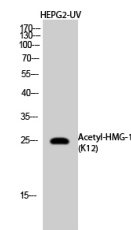
Gene ID	3146
Gene Symbol	HMGB1
Uniprot ID	HMGB1_HUMAN
Immunogen	Synthesized peptide derived from human HMG-1 around the acetylation site of K12.
Immunogen Region	N-terminal
Specificity	Acetyl-HMG-1 (K12) polyclonal antibody detects endogenous levels of HMG-1 protein only when acetylation at K12.
Immunogen Sequence	



Immunohistochemical analysis of paraffin-embedded human brain, antibody was diluted at 1:100

Immunohistochemical analysis of paraffin-embedded human breast, antibody was diluted at 1:100

Immunohistochemical analysis of paraffin-embedded human brain, antibody was diluted at 1:100



Western blot analysis of HepG2 cells treated with UV using Acetyl-HMG-1 (K12) Polyclonal Antibody. Antibody was diluted at 1:1000. Secondary antibody was diluted at 1:20000

This product is suitable for in-vitro studies under the RESEARCH USE ONLY [RUO] licence. This product must not be used as for diagnostic or other medical purposes.
St John's Laboratory Ltd, Knowledge Dock Business Centre, University Way, London, E16 2RD | Tel: 0208 223 3081 | Fax: 0207 681 2580