

Anti-Acetyl-Histone H2B-Lys23 antibody (STJ97178)

STJ97178

GENERAL INFORMATION

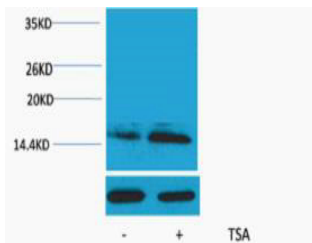
Product Type	Primary antibodies
Short Description	Rabbit polyclonal antibody anti-Acetyl-Histone H2B type 1-A and Histone H2B type 1-B and Histone H2B type 1-C/E/F/G/I-Lys23 is suitable for use in Western Blot research applications.
Applications	WB
Host/Source	Rabbit
Reactivity	Human, Mouse, Rat

PRODUCT PROPERTIES

Clonality	Polyclonal
Clone ID	
Concentration	
Conjugation	Unconjugated
Purification	The antibody was affinity-purified from rabbit anti-serum by affinity-chromatography.
Dilution Range	WB 1:500-1000
Formulation	PBS, pH 7.4, 0.5% BSA, 0.02% Sodium Azide and 50% Glycerol.
Isotype	IgG
Storage Instruction	Store at -20°C for up to 1 year from the date of receipt, and avoid repeat freeze-thaw cycles.

TARGET INFORMATION

Gene ID	255626 3017/8339/8343/8344/8346/8347 H2BC1 H2BC4.H2BC6.H2BC7.H2BC8.H2BC10
Uniprot ID	H2B1A_HUMAN H2B1C_HUMAN H2B1B_HUMAN
Immunogen	Synthetic peptide of Histone H2B (Acetyl Lys23)
Immunogen Region	
Specificity	Acetyl-Histone H2B-Lys23 polyclonal antibody (Histone H2B type 1-A and Histone H2B type 1-B and Histone H2B type 1-C/E/F/G/I) binds to endogenous Histone H2B type 1-A and Histone H2B type 1-B and Histone H2B type 1-C/E/F/G/I.
Immunogen Sequence	



Western blot analysis of extracts from HeLa cells, untreated (-) or treated, 1:5000. Secondary antibody was diluted at 1:20000 cells nucleus extracted by Minute TM Cytoplasmic and Nuclear Fractionation kit (SC-003, Inventiotech, MN, USA).

This product is suitable for in-vitro studies under the RESEARCH USE ONLY [RUO] licence. This product must not be used as for diagnostic or other medical purposes.
 St John's Laboratory Ltd, Knowledge Dock Business Centre, University Way, London, E16 2RD | Tel: 0208 223 3081