

Anti-Acetyl-Histone H2B-Lys12 antibody (STJ97175)

STJ97175

GENERAL INFORMATION

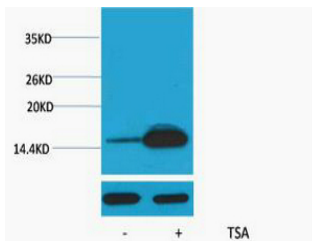
| | |
|--------------------------|--|
| Product Type | Primary antibodies |
| Short Description | Rabbit polyclonal antibody anti-Acetyl-Histone H2B type 1-A and Histone H2B type 1-B and Histone H2B type 1-C/E/F/G/I-Lys12 is suitable for use in Western Blot research applications. |
| Applications | WB |
| Host/Source | Rabbit |
| Reactivity | Human, Mouse, Rat |

PRODUCT PROPERTIES

| | |
|----------------------------|--|
| Clonality | Polyclonal |
| Clone ID | |
| Concentration | |
| Conjugation | Unconjugated |
| Purification | The antibody was affinity-purified from rabbit anti-serum by affinity-chromatography. |
| Dilution Range | WB 1:1000-2000 |
| Formulation | PBS, pH 7.4, 0.5% BSA, 0.02% Sodium Azide and 50% Glycerol. |
| Isotype | IgG |
| Storage Instruction | Store at -20°C for up to 1 year from the date of receipt, and avoid repeat freeze-thaw cycles. |

TARGET INFORMATION

| | |
|---------------------------|---|
| Gene ID | 3018 255626 |
| Gene Symbol | H2BC3 H2BC1 H2B1B_HUMAN H2B1A_HUMAN H2B1C_HUMAN |
| Immunogen | Synthetic peptide of Histone H2B (Acetyl Lys12) |
| Immunogen Region | |
| Specificity | Acetyl-Histone H2B-Lys12 polyclonal antibody (Histone H2B type 1-A and Histone H2B type 1-B and Histone H2B type 1-C/E/F/G/I) binds to endogenous Histone H2B type 1-A and Histone H2B type 1-B and Histone H2B type 1-C/E/F/G/I. |
| Immunogen Sequence | |



Western blot analysis of extracts from HeLa cells, untreated (-) or treated, 1:5000. Secondary antibody was diluted at 1:20000 cells nucleus extracted by Minute TM Cytoplasmic and Nuclear Fractionation kit (SC-003, Inventibiotec, MN, USA).

This product is suitable for in-vitro studies under the RESEARCH USE ONLY [RUO] licence. This product must not be used as for diagnostic or other medical purposes.
St John's Laboratory Ltd, Knowledge Dock Business Centre, University Way, London, E16 2RD | Tel: 0208 223 3081