

Anti-Acetyl-Histone H2B-Lys15 antibody (STJ97173)

STJ97173

GENERAL INFORMATION

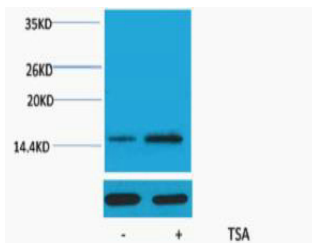
Product Type	Primary antibodies
Short Description	Rabbit polyclonal antibody anti-Acetyl-Histone H2A type 1 and Histone H2A type 2-A and Histone H2A type 3-Lys15 is suitable for use in Western Blot research applications.
Applications	WB
Host/Source	Rabbit
Reactivity	Human, Mouse, Rat

PRODUCT PROPERTIES

Clonality	Polyclonal
Clone ID	
Concentration	
Conjugation	Unconjugated
Purification	The antibody was affinity-purified from rabbit anti-serum by affinity-chromatography.
Dilution Range	WB 1:500-1000
Formulation	PBS, pH 7.4, 0.5% BSA, 0.02% Sodium Azide and 50% Glycerol.
Isotype	IgG
Storage Instruction	Store at -20°C for up to 1 year from the date of receipt, and avoid repeat freeze-thaw cycles.

TARGET INFORMATION

Gene ID	723790/8337 8329/8330/8332/8336/8969 H2AC18.H2AC19 H2AC11.H2AC13.H2AC15.H2AC16
Uniprot ID	H2A2A_HUMAN H2A1_HUMAN H2A3_HUMAN
Immunogen	Synthetic peptide of Histone H2A (Acetyl Lys15)
Immunogen Region	
Specificity	Acetyl-Histone H2B-Lys15 polyclonal antibody (Histone H2A type 1 and Histone H2A type 2-A and Histone H2A type 3) binds to endogenous Histone H2A type 1 and Histone H2A type 2-A and Histone H2A type 3.
Immunogen Sequence	



Western blot analysis of extracts from HeLa cells, untreated (-) or treated, 1:5000.. Secondary antibody was diluted at 1:20000

This product is suitable for in-vitro studies under the RESEARCH USE ONLY [RUO] licence. This product must not be used as for diagnostic or other medical purposes.
St John's Laboratory Ltd, Knowledge Dock Business Centre, University Way, London, E16 2RD | Tel: 0208 223 3081