

Anti-Mono-Methyl-Histone H1-Lys25 antibody (STJ97160)

STJ97160

GENERAL INFORMATION

Product Type	Primary antibodies
Short Description	Mouse polyclonal antibody anti-Mono-Methyl-Histone H1.1 and Histone H1.2 and Histone H1.3 and Histone H1.4-Lys25 is suitable for use in Western Blot research applications.
Applications	WB
Host/Source	Mouse
Reactivity	Human, Mouse, Rat

PRODUCT PROPERTIES

Clonality	Polyclonal
Clone ID	
Concentration	
Conjugation	Unconjugated
Purification	The antibody was affinity-purified from rabbit anti-serum by affinity-chromatography.
Dilution Range	WB 1:500-1000
Formulation	PBS, pH 7.4, 0.5% BSA, 0.02% Sodium Azide and 50% Glycerol.
Isotype	IgG
Storage Instruction	Store at -20°C for up to 1 year from the date of receipt, and avoid repeat freeze-thaw cycles.

TARGET INFORMATION

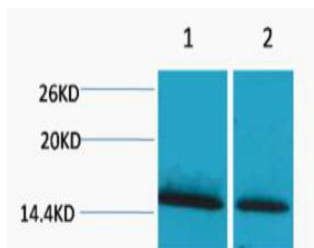
Gene ID [3006](#)
[3007](#)
[3024](#)
[H1-2](#)
[H1-3](#)
[H12_HUMAN](#)
[H13_HUMAN](#)
[H11_HUMAN](#)

Immunogen Synthetic peptide of Histone H1 (Mono Methyl Lys25)

Immunogen Region

Specificity Mono-Methyl-Histone H1-Lys25 polyclonal antibody (Histone H1.1 and Histone H1.2 and Histone H1.3 and Histone H1.4) binds to endogenous Histone H1.1 and Histone H1.2 and Histone H1.3 and Histone H1.4.

Immunogen Sequence



Western blot analysis of 1) HeLa, 2) 3T3, diluted at 1:2000. Secondary antibody was diluted at 1:20000

This product is suitable for in-vitro studies under the RESEARCH USE ONLY [RUO] licence. This product must not be used as for diagnostic or other medical purposes.

St John's Laboratory Ltd, Knowledge Dock Business Centre, University Way, London, E16 2RD | Tel: 0208 223 3081