

Anti-LTF antibody [Q100] (STJ97062)

STJ97062

GENERAL INFORMATION

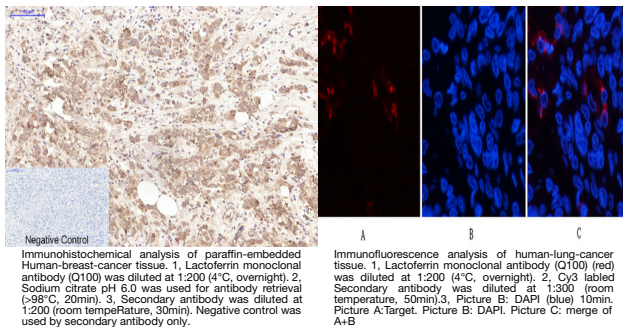
Product Type	Primary antibodies
Short Description	Mouse monoclonal antibody anti-Lactotransferrin is suitable for use in Immunofluorescence, Immunocytochemistry, Immunohistochemistry and ELISA research applications.
Applications	IF, ICC, IHC-P, ELISA
Host/Source	Mouse
Reactivity	Human

PRODUCT PROPERTIES

Clonality	Monoclonal
Clone ID	Q100
Concentration	
Conjugation	Unconjugated
Purification	The antibody was isolated from ascitic fluid by immunoaffinity chromatography using antigens coupled to agarose beads.
Dilution Range	IF 1:50-200 ELISA 1:5000-10000 IHC 1:50-300
Formulation	PBS, pH 7.4, 0.5% BSA, 0.02% Sodium Azide and 50% Glycerol.
Isotype	IgG1
Storage Instruction	Store at -20°C for up to 1 year from the date of receipt, and avoid repeat freeze-thaw cycles.

TARGET INFORMATION

Gene ID	4057
Gene Symbol	LTF
Uniprot ID	TRFL_HUMAN
Immunogen	Synthetic peptide of Lactoferrin
Immunogen Region	
Specificity	LTF monoclonal antibody (Lactotransferrin) binds to endogenous Lactotransferrin.
Immunogen Sequence	



This product is suitable for in-vitro studies under the RESEARCH USE ONLY [RUO] licence. This product must not be used as for diagnostic or other medical purposes.
St John's Laboratory Ltd, Knowledge Dock Business Centre, University Way, London, E16 2RD | Tel: 0208 223 3081