

Anti-TUBB2A antibody [Mix] (STJ97053)

STJ97053

GENERAL INFORMATION

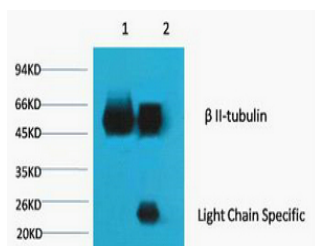
Product Type	Primary antibodies
Short Description	Mouse monoclonal antibody anti-Tubulin Beta-2a Chain is suitable for use in Western Blot, Immunohistochemistry, Immunofluorescence and Immunoprecipitation research applications.
Applications	WB, IHC-P, IF-P, IP
Host/Source	Mouse
Reactivity	Mouse, Rat, Human

PRODUCT PROPERTIES

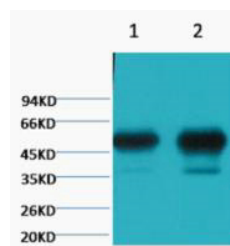
Clonality	Monoclonal
Clone ID	Mix
Concentration	
Conjugation	Unconjugated
Purification	The antibody was isolated from ascitic fluid by immunoaffinity chromatography using antigens coupled to agarose beads.
Dilution Range	WB 1:50000-100000 IP 1:200 IHC 1:50-300
Formulation	PBS, pH 7.4, 0.5% BSA, 0.02% Sodium Azide and 50% Glycerol.
Isotype	IgG1
Storage Instruction	Store at -20°C for up to 1 year from the date of receipt, and avoid repeat freeze-thaw cycles.

TARGET INFORMATION

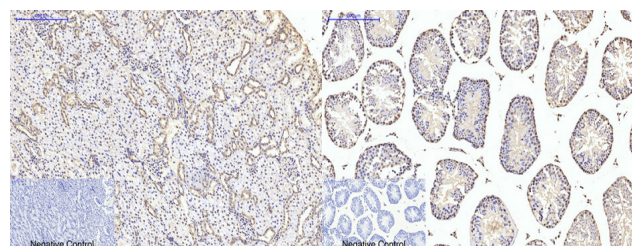
Gene ID	7280
Gene Symbol	TUBB2A
Uniprot ID	TBB2A_HUMAN
Immunogen	Synthetic peptide of Beta II tubulin
Immunogen Region	
Specificity	TUBB2A monoclonal antibody (Tubulin Beta-2a Chain) binds to endogenous Tubulin Beta-2a Chain.
Immunogen Sequence	



1) Input: Mouse Brain Tissue Lysate, 2) IP product: IP dilute 1:200, Western blot analysis: primary antibody: TDY191 1: 10000, Secondary antibody: Goat anti-Mouse IgG, Light chain specific (S003), 1: 5000



Western blot analysis of 1) Mouse Brain tissue, 2) Rat Brain tissue, diluted at 1:100000.



Immunohistochemical analysis of paraffin-embedded Rat-kidney tissue. 1, Beta II tubulin monoclonal antibody (Mix) was diluted at 1:200 (4°C, overnight), 2, Sodium citrate pH 6.0 was used for antibody retrieval (>98°C, 20min), 3, Secondary antibody was diluted at 1:200 (room temperature, 30min). Negative control was used by secondary antibody only.

Immunohistochemical analysis of paraffin-embedded Mouse-testis tissue. 1, Beta II tubulin monoclonal antibody (Mix) was diluted at 1:200 (4°C, overnight), 2, Sodium citrate pH 6.0 was used for antibody retrieval (>98°C, 20min), 3, Secondary antibody was diluted at 1:200 (room temperature, 30min). Negative control was used by secondary antibody only.

This product is suitable for in-vitro studies under the RESEARCH USE ONLY [RUO] licence. This product must not be used as for diagnostic or other medical purposes.

St John's Laboratory Ltd, Knowledge Dock Business Centre, University Way, London, E16 2RD | Tel: 0208 223 3081