

Anti-ACTA1 antibody (Internal) [4B11] (STJ97051)

STJ97051

GENERAL INFORMATION

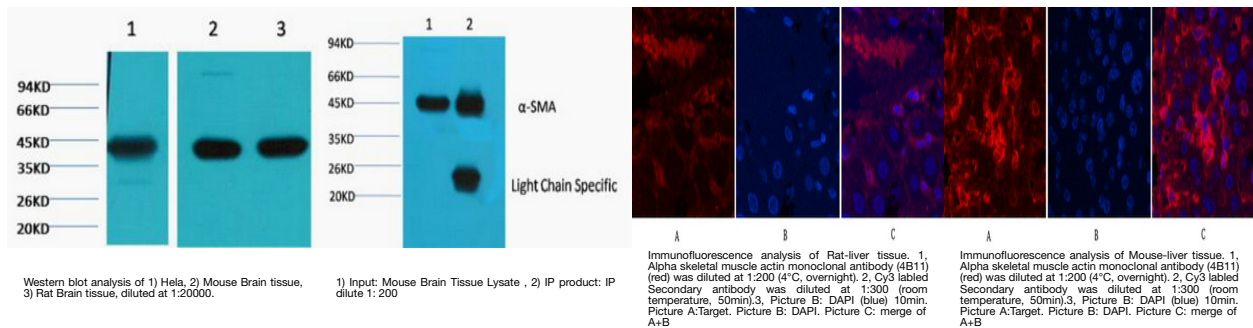
| | |
|--------------------------|---|
| Product Type | Primary antibodies |
| Short Description | Mouse monoclonal antibody anti-Actin-Alpha Skeletal Muscle (Internal) is suitable for use in Western Blot, Immunohistochemistry, Immunofluorescence, Immunocytochemistry and Immunoprecipitation research applications. |
| Applications | WB, IHC-P, IF, ICC, IP |
| Host/Source | Mouse |
| Reactivity | Human, Mouse, Rat |

PRODUCT PROPERTIES

| | |
|----------------------------|--|
| Clonality | Monoclonal |
| Clone ID | 4B11 |
| Concentration | |
| Conjugation | Unconjugated |
| Purification | The antibody was isolated from ascitic fluid by immunoaffinity chromatography using antigens coupled to agarose beads. |
| Dilution Range | WB 1:500-10000 IP 1:200 IF 1:200 IHC 1:50-300 |
| Formulation | PBS, pH 7.4, 0.5% BSA, 0.02% Sodium Azide and 50% Glycerol. |
| Isotype | IgG1 |
| Storage Instruction | Store at -20°C for up to 1 year from the date of receipt, and avoid repeat freeze-thaw cycles. |

TARGET INFORMATION

| | |
|---------------------------|--|
| Gene ID | 58 |
| Gene Symbol | ACTA1 |
| Uniprot ID | ACTS_HUMAN |
| Immunogen | Synthetic peptide of Alpha skeletal muscle actin |
| Immunogen Region | Internal |
| Specificity | ACTA1 monoclonal antibody (Actin-Alpha Skeletal Muscle) binds to endogenous Actin-Alpha Skeletal Muscle at the amino acid region Internal. |
| Immunogen Sequence | |



This product is suitable for in-vitro studies under the RESEARCH USE ONLY [RUO] licence. This product must not be used as for diagnostic or other medical purposes.
St John's Laboratory Ltd, Knowledge Dock Business Centre, University Way, London, E16 2RD | Tel: 0208 223 3081