

## Anti-TUBB3 antibody [Mix] (STJ97041)

STJ97041

### GENERAL INFORMATION

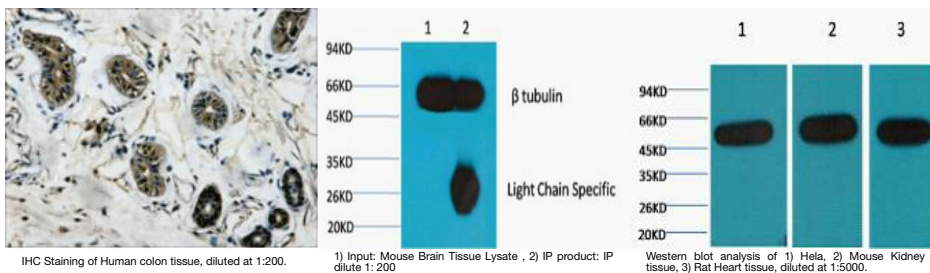
<b>Product Type</b>	Primary antibodies
<b>Short Description</b>	Mouse monoclonal antibody anti-Tubulin Beta-3 Chain is suitable for use in Western Blot, Immunohistochemistry, Immunofluorescence and Immunoprecipitation research applications.
<b>Applications</b>	WB, IHC-P, IF-P, IP
<b>Host/Source</b>	Mouse
<b>Reactivity</b>	Human, Rat, Mouse, Simian, Dog, Chicken, Hamster, Rabbit

### PRODUCT PROPERTIES

<b>Clonality</b>	Monoclonal
<b>Clone ID</b>	Mix
<b>Concentration</b>	1 mg/mL
<b>Conjugation</b>	Unconjugated
<b>Purification</b>	The antibody was isolated from ascitic fluid by immunoaffinity chromatography using antigens coupled to agarose beads.
<b>Dilution Range</b>	WB 1:500-10000 IHC 1:200 IP 1:200
<b>Formulation</b>	PBS, pH 7.4, 0.5% BSA, 0.02% Sodium Azide and 50% Glycerol.
<b>Isotype</b>	IgG1
<b>Storage Instruction</b>	Store at -20°C for up to 1 year from the date of receipt, and avoid repeat freeze-thaw cycles.

### TARGET INFORMATION

<b>Gene ID</b>	10381
<b>Gene Symbol</b>	TUBB3
<b>Uniprot ID</b>	TBB3_HUMAN
<b>Immunogen</b>	Synthetic peptide of Beta-tubulin
<b>Immunogen Region</b>	
<b>Specificity</b>	TUBB3 monoclonal antibody (Tubulin Beta-3 Chain) binds to endogenous Tubulin Beta-3 Chain.
<b>Immunogen Sequence</b>	



This product is suitable for in-vitro studies under the RESEARCH USE ONLY [RUO] licence. This product must not be used as for diagnostic or other medical purposes.  
 St John's Laboratory Ltd, Knowledge Dock Business Centre, University Way, London, E16 2RD | Tel: 0208 223 3081