

Anti-PARP1 antibody [M3] (STJ97033)

STJ97033

GENERAL INFORMATION

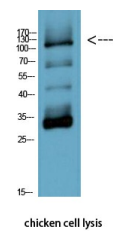
Product Type	Primary antibodies
Short Description	Mouse monoclonal antibody anti-Poly Adp-Ribose Polymerase 1 is suitable for use in Western Blot research applications.
Applications	WB
Host/Source	Mouse
Reactivity	Human, Chicken

PRODUCT PROPERTIES

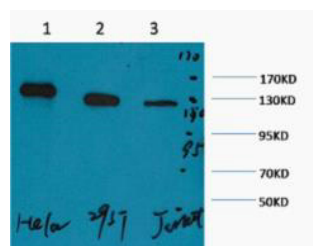
Clonality	Monoclonal
Clone ID	M3
Concentration	
Conjugation	Unconjugated
Purification	The antibody was isolated from ascitic fluid by immunoaffinity chromatography using antigens coupled to agarose beads.
Dilution Range	WB 1:1000-3000
Formulation	PBS, pH 7.4, 0.5% BSA, 0.02% Sodium Azide and 50% Glycerol.
Isotype	IgG1
Storage Instruction	Store at -20°C for up to 1 year from the date of receipt, and avoid repeat freeze-thaw cycles.

TARGET INFORMATION

Gene ID	142
Gene Symbol	PARP1
Uniprot ID	PARP1_HUMAN
Immunogen	Synthetic peptide of PARP
Immunogen Region	
Specificity	PARP1 monoclonal antibody (Poly Adp-Ribose Polymerase 1) binds to endogenous Poly Adp-Ribose Polymerase 1.
Immunogen Sequence	



Western blot analysis of chicken cell lysis using Anti-PARP1 antibody [M3] (STJ97033). Antibody diluted at 1:1000



Western blot analysis of 1) HeLa, 2) 293T, 3) Jurkat, diluted at 1:2000. cells nucleus extracted by Minute TM Cytoplasmic and Nuclear Fractionation Kit (SC-003, Inventiotech, MN, USA).

This product is suitable for in-vitro studies under the RESEARCH USE ONLY [RUO] licence. This product must not be used as for diagnostic or other medical purposes.
 St John's Laboratory Ltd, Knowledge Dock Business Centre, University Way, London, E16 2RD | Tel: 0208 223 3081