

Anti-mCherry-Tag antibody [Mix] (STJ97027)

STJ97027

GENERAL INFORMATION

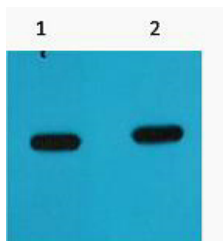
Product Type	Primary antibodies
Short Description	Mouse monoclonal antibody anti-mCherry-Tag is suitable for use in Western Blot research applications.
Applications	WB
Host/Source	Mouse
Reactivity	Tag

PRODUCT PROPERTIES

Clonality	Monoclonal
Clone ID	Mix
Concentration	
Conjugation	Unconjugated
Purification	The antibody was isolated from ascitic fluid by immunoaffinity chromatography using antigens coupled to agarose beads.
Dilution Range	WB 1:5000
Formulation	PBS, pH 7.4, 0.5% BSA, 0.02% Sodium Azide and 50% Glycerol.
Isotype	IgG1
Storage Instruction	Store at -20°C for up to 1 year from the date of receipt, and avoid repeat freeze-thaw cycles.

TARGET INFORMATION

Gene ID	
Gene Symbol	
Uniprot ID	
Immunogen	Recombinant Protein of mCherry
Immunogen Region	
Specificity	The antibody detects mCherry and mCherry tag fusion proteins.
Immunogen Sequence	



Western blot analysis of mCherry recombinant protein, diluted at, 1) 1:5000, 2) 1:10000

This product is suitable for in-vitro studies under the RESEARCH USE ONLY [RUO] licence. This product must not be used as for diagnostic or other medical purposes.
St John's Laboratory Ltd, Knowledge Dock Business Centre, University Way, London, E16 2RD | Tel: 0208 223 3081