

## Anti-IL2RA antibody [Q22] (STJ97009)

STJ97009

### GENERAL INFORMATION

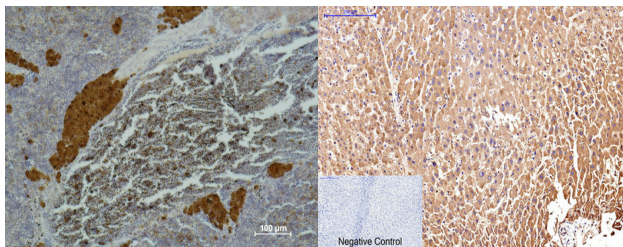
<b>Product Type</b>	Primary antibodies
<b>Short Description</b>	Mouse monoclonal antibody anti-Interleukin-2 Receptor Subunit Alpha is suitable for use in Immunohistochemistry and Immunofluorescence research applications.
<b>Applications</b>	IHC-P, IF-P
<b>Host/Source</b>	Mouse
<b>Reactivity</b>	Human

### PRODUCT PROPERTIES

<b>Clonality</b>	Monoclonal
<b>Clone ID</b>	Q22
<b>Concentration</b>	
<b>Conjugation</b>	Unconjugated
<b>Purification</b>	The antibody was isolated from ascitic fluid by immunoaffinity chromatography using antigens coupled to agarose beads.
<b>Dilution Range</b>	IHC 1:200
<b>Formulation</b>	PBS, pH 7.4, 0.5% BSA, 0.02% Sodium Azide and 50% Glycerol.
<b>Isotype</b>	IgG1
<b>Storage Instruction</b>	Store at -20°C for up to 1 year from the date of receipt, and avoid repeat freeze-thaw cycles.

### TARGET INFORMATION

<b>Gene ID</b>	3559
<b>Gene Symbol</b>	IL2RA
<b>Uniprot ID</b>	IL2RA_HUMAN
<b>Immunogen</b>	Synthetic peptide of CD25
<b>Immunogen Region</b>	
<b>Specificity</b>	IL2RA monoclonal antibody (Interleukin-2 Receptor Subunit Alpha) binds to endogenous Interleukin-2 Receptor Subunit Alpha.
<b>Immunogen Sequence</b>	



Immunohistochemical analysis of paraffin-embedded Mouse Spleen Tissue using CD 25 Mouse mAb diluted at 1:500.

Immunohistochemical analysis of paraffin-embedded Human-liver tissue. 1. CD25 monoclonal antibody (Q22) was diluted at 1:200 (4°C, overnight). 2. Sodium citrate pH 6.0 was used for antibody retrieval (>98°C, 20min). 3. Secondary antibody was diluted at 1:200 (room temperature, 30min). Negative control was used by secondary antibody only.

This product is suitable for in-vitro studies under the RESEARCH USE ONLY [RUO] licence. This product must not be used as for diagnostic or other medical purposes.  
 St John's Laboratory Ltd, Knowledge Dock Business Centre, University Way, London, E16 2RD | Tel: 0208 223 3081