

Anti-CD16 antibody [Q32] (STJ96992)

STJ96992

GENERAL INFORMATION

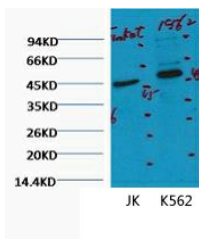
Product Type	Primary antibodies
Short Description	Mouse monoclonal antibody anti-Low affinity immunoglobulin gamma Fc region receptor III-A and Low affinity immunoglobulin gamma Fc region receptor III-B is suitable for use in Western Blot, Immunohistochemistry and Immunofluorescence research applica
Applications	WB, IHC-P, IF-P
Host/Source	Mouse
Reactivity	Human

PRODUCT PROPERTIES

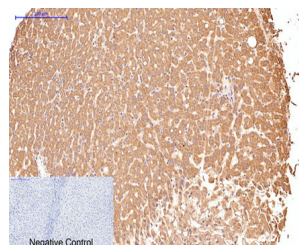
Clonality	Monoclonal
Clone ID	Q32
Concentration	
Conjugation	Unconjugated
Purification	The antibody was isolated from ascitic fluid by immunoaffinity chromatography using antigens coupled to agarose beads.
Dilution	WB 1:1000
Range	IHC 1:50-300
Formulation	PBS, pH 7.4, 0.5% BSA, 0.02% Sodium Azide and 50% Glycerol.
Isotype	IgG1
Storage	Store at -20°C for up to 1 year from the date of receipt, and avoid repeat freeze-thaw cycles.
Instruction	

TARGET INFORMATION

Gene ID	2215 2214
Gene Symbol	FCGR3B FCGR3A
Uniprot ID	FCG3B_HUMAN FCG3A_HUMAN
Immunogen	Synthetic peptide of CD16
Immunogen Region	
Specificity	CD16 monoclonal antibody (Low affinity immunoglobulin gamma Fc region receptor III-A and Low affinity immunoglobulin gamma Fc region receptor III-B) binds to endogenous Low affinity immunoglobulin gamma Fc region receptor III-A and Low affinity immun
Immunogen Sequence	



Western blot analysis of 1) Jurkat, 2) K562, diluted at 1:2000.



Immunohistochemical analysis of paraffin-embedded Human-liver tissue. 1. CD16 monoclonal antibody (Q32) was diluted at 1:200 (4°C, overnight). 2. Sodium citrate pH 6.0 was used for antibody retrieval (>98°C, 20min). 3. Secondary antibody was diluted at 1:200 (room temperature, 30min). Negative control was used by secondary antibody only.