

## Anti-Tri-Methyl-Histone H3-Lys36 antibody [Q12] (STJ96990)

STJ96990

### GENERAL INFORMATION

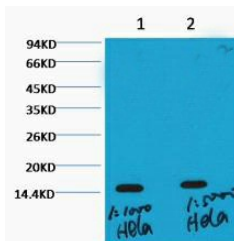
|                          |   |
|--------------------------|---|
| <b>Product Type</b>      | Primary antibodies  |
| <b>Short Description</b> | Mouse monoclonal antibody anti-Tri-Methyl-Histone H3.1 and Histone H3.2 and Histone H3.3-Lys36 is suitable for use in Western Blot research applications. |
| <b>Applications</b>      | WB  |
| <b>Host/Source</b>       | Mouse   |
| <b>Reactivity</b>        | Human, Mouse, Rat   |

### PRODUCT PROPERTIES

|                            |  |
|----------------------------|--|
| <b>Clonality</b>           | Monoclonal   |
| <b>Clone ID</b>            | Q12  |
| <b>Concentration</b>       |  |
| <b>Conjugation</b>         | Unconjugated   |
| <b>Purification</b>        | The antibody was isolated from ascitic fluid by immunoaffinity chromatography using antigens coupled to agarose beads. |
| <b>Dilution Range</b>      | WB 1:1000-3000   |
| <b>Formulation</b>         | PBS, pH 7.4, 0.5% BSA, 0.02% Sodium Azide and 50% Glycerol.  |
| <b>Isotype</b>             | IgG1   |
| <b>Storage Instruction</b> | Store at -20°C for up to 1 year from the date of receipt, and avoid repeat freeze-thaw cycles.                         |

### TARGET INFORMATION

|                           |  |
|---------------------------|--|
| <b>Gene ID</b>            | <a href="#">3020/3021</a><br><a href="#">8350/8351/8352/8353/8354/8355/8356/8357/8358/8968</a>   |
| <b>Gene Symbol</b>        | <a href="#">H3-3A.H3-3B</a><br><a href="#">H3C1.H3C2.H3C</a>   |
| <b>Uniprot ID</b>         | <a href="#">H33_HUMAN</a><br><a href="#">H31_HUMAN</a><br><a href="#">H32_HUMAN</a>  |
| <b>Immunogen</b>          | Synthetic peptide of Histone H3 (Tri Methyl Lys36)   |
| <b>Immunogen Region</b>   |  |
| <b>Specificity</b>        | Tri-Methyl-Histone H3-Lys36 monoclonal antibody (Histone H3.1 and Histone H3.2 and Histone H3.3) binds to endogenous Histone H3.1 and Histone H3.2 and Histone H3.3. |
| <b>Immunogen Sequence</b> |  |



Western blot analysis of HeLa, diluted at 1) 1:1000 ; 2) 1:5000 cells nucleus extracted by Minute TM Cytoplasmic and Nuclear Fractionation kit (SC-003, Inventibiotec, MN, USA).