

Anti-KRT17 antibody [10A1] (STJ96983)

STJ96983

GENERAL INFORMATION

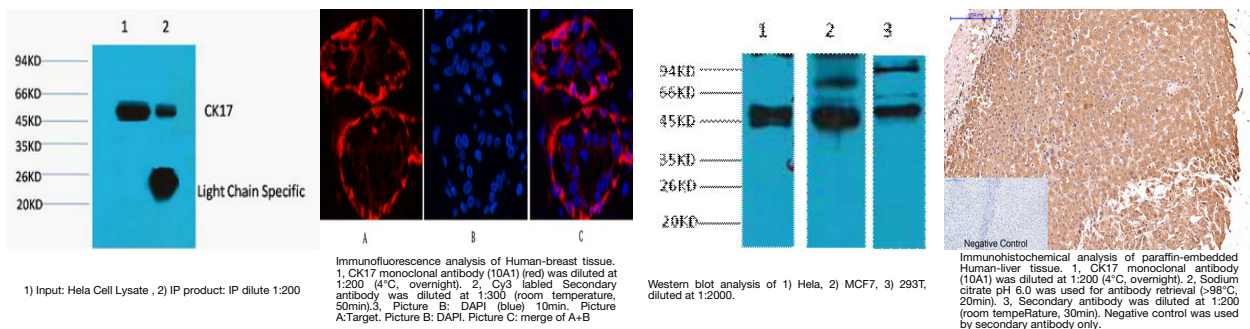
Product Type	Primary antibodies
Short Description	Mouse monoclonal antibody anti-Keratin-Type I Cytoskeletal 17 is suitable for use in Western Blot, Immunohistochemistry, Immunofluorescence, Immunocytochemistry and Immunoprecipitation research applications.
Applications	WB, IHC-P, IF, ICC, IP
Host/Source	Mouse
Reactivity	Human

PRODUCT PROPERTIES

Clonality	Monoclonal
Clone ID	10A1
Concentration	
Conjugation	Unconjugated
Purification	The antibody was isolated from ascitic fluid by immunoaffinity chromatography using antigens coupled to agarose beads.
Dilution	WB 1:1000
Range	IP 1:200 IF 1:200 IHC 1:50-300
Formulation	PBS, pH 7.4, 0.5% BSA, 0.02% Sodium Azide and 50% Glycerol.
Isotype	IgG1
Storage Instruction	Store at -20°C for up to 1 year from the date of receipt, and avoid repeat freeze-thaw cycles.

TARGET INFORMATION

Gene ID	3872
Gene Symbol	KRT17
Uniprot ID	K1C17_HUMAN
Immunogen	Synthetic peptide of CK17
Immunogen Region	
Specificity	KRT17 monoclonal antibody (Keratin-Type I Cytoskeletal 17) binds to endogenous Keratin-Type I Cytoskeletal 17.
Immunogen Sequence	



This product is suitable for in-vitro studies under the RESEARCH USE ONLY [RUO] licence. This product must not be used as for diagnostic or other medical purposes.
 St John's Laboratory Ltd, Knowledge Dock Business Centre, University Way, London, E16 2RD | Tel: 0208 223 3081