

Anti-Cytokeratin 6 antibody [4A1] (STJ96982)

STJ96982

GENERAL INFORMATION

Product Type	Primary antibodies
Short Description	Mouse monoclonal antibody anti-Keratin, type II cytoskeletal 6A and Keratin, type II cytoskeletal 6B and Keratin, type II cytoskeletal 6C is suitable for use in Western Blot, Immunohistochemistry, Immunofluorescence and Immunocytochemistry research a
Applications	WB, IHC-P, IF, ICC
Host/Source	Mouse
Reactivity	Human

PRODUCT PROPERTIES

Clonality	Monoclonal
Clone ID	4A1
Concentration	
Conjugation	Unconjugated
Purification	The antibody was isolated from ascitic fluid by immunoaffinity chromatography using antigens coupled to agarose beads.
Dilution	WB 1:1000
Range	IF 1:200 IHC 1:50-300
Formulation	PBS, pH 7.4, 0.5% BSA, 0.02% Sodium Azide and 50% Glycerol.
Isotype	IgG1
Storage Instruction	Store at -20°C for up to 1 year from the date of receipt, and avoid repeat freeze-thaw cycles.

TARGET INFORMATION

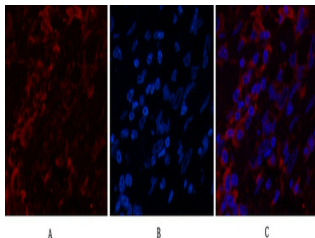
Gene ID [3854](#)
[3853](#)
[286887](#)
[KRT6B](#)
[KRT6A](#)
[K2C6B_HUMAN](#)
[K2C6A_HUMAN](#)
[K2C6C_HUMAN](#)

Immunogen Synthetic peptide of Cytokeratin 6

Immunogen Region

Specificity Cytokeratin 6 monoclonal antibody (Keratin, type II cytoskeletal 6A and Keratin, type II cytoskeletal 6B and Keratin, type II cytoskeletal 6C) binds to endogenous Keratin, type II cytoskeletal 6A and Keratin, type II cytoskeletal 6B and Keratin, type

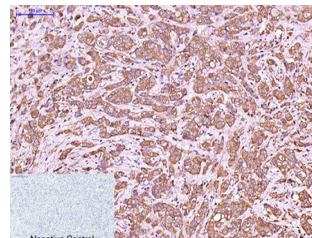
Immunogen Sequence



Immunofluorescence analysis of Human-breast-cancer tissue. 1, Cytokeratin 6 monoclonal antibody (4A1) (red) was diluted at 1:200 (4°C, overnight). 2, Cy3 labeled Secondary antibody was diluted at 1:300 (room temperature, 50min). 3, Picture B: DAPI (blue) 10min. Picture A: Target. Picture B: DAPI. Picture C: merge of A+B



Western blot analysis of 1) HeLa, 2) HepG2, diluted at 1:2000.



Immunohistochemical analysis of paraffin-embedded Human-breast-cancer tissue. 1, Cytokeratin 6 monoclonal antibody (4A1) was diluted at 1:200 (4°C, overnight). 2, Sodium citrate pH 6.0 was used for antibody retrieval (>98°C, 20min). 3, Secondary antibody was diluted at 1:200 (room temperature, 30min). Negative control was used by secondary antibody only.

This product is suitable for in-vitro studies under the RESEARCH USE ONLY [RUO] licence. This product must not be used as for diagnostic or other medical purposes.
 St John's Laboratory Ltd, Knowledge Dock Business Centre, University Way, London, E16 2RD | Tel: 0208 223 3081