

Anti-ERCC1 antibody [1B10] (STJ96980)

STJ96980

GENERAL INFORMATION

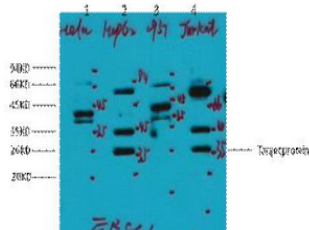
Product Type	Primary antibodies
Short Description	Mouse monoclonal antibody anti-Dna Excision Repair Protein Ercc-1 is suitable for use in Western Blot, Immunohistochemistry and Immunofluorescence research applications.
Applications	WB, IHC-P, IF-P
Host/Source	Mouse
Reactivity	Human

PRODUCT PROPERTIES

Clonality	Monoclonal
Clone ID	1B10
Concentration	
Conjugation	Unconjugated
Purification	The antibody was isolated from ascitic fluid by immunoaffinity chromatography using antigens coupled to agarose beads.
Dilution Range	IHC 100-300 WB 1:1000
Formulation	PBS, pH 7.4, 0.5% BSA, 0.02% Sodium Azide and 50% Glycerol.
Isotype	IgG1
Storage	Store at -20°C for up to 1 year from the date of receipt, and avoid repeat freeze-thaw cycles.
Instruction	

TARGET INFORMATION

Gene ID	2067
Gene Symbol	ERCC1
Uniprot ID	ERCC1_HUMAN
Immunogen	Synthetic peptide of ERCC1
Immunogen Region	
Specificity	ERCC1 monoclonal antibody (Dna Excision Repair Protein Ercc-1) binds to endogenous Dna Excision Repair Protein Ercc-1.
Immunogen Sequence	



Western blot analysis of 1) HeLa, 2) HepG2, 3) 293T, 4) Jurkat, diluted at 1:2000, cells nucleus extracted by Minute TM Cytoplasmic and Nuclear Fractionation kit (SC-003, Inventiotech, MN, USA).

This product is suitable for in-vitro studies under the RESEARCH USE ONLY [RUO] licence. This product must not be used as for diagnostic or other medical purposes.
 St John's Laboratory Ltd, Knowledge Dock Business Centre, University Way, London, E16 2RD | Tel: 0208 223 3081