

Anti-ABCB5 antibody [11A2] (STJ96976)

STJ96976

GENERAL INFORMATION

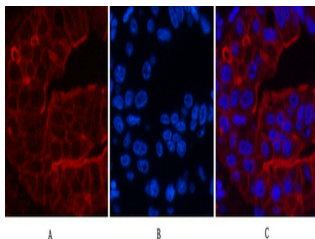
| | |
|--------------------------|--|
| Product Type | Primary antibodies |
| Short Description | Mouse monoclonal antibody anti-Atp-Binding Cassette Sub-Family B Member 5 is suitable for use in Western Blot, Immunohistochemistry, Immunofluorescence and Immunocytochemistry research applications. |
| Applications | WB, IHC-P, IF, ICC |
| Host/Source | Mouse |
| Reactivity | Human |

PRODUCT PROPERTIES

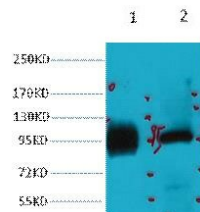
| | |
|----------------------------|--|
| Clonality | Monoclonal |
| Clone ID | 11A2 |
| Concentration | |
| Conjugation | Unconjugated |
| Purification | The antibody was isolated from ascitic fluid by immunoaffinity chromatography using antigens coupled to agarose beads. |
| Dilution | WB 1:2000 |
| Range | IF 1:200 IHC 1:50-300 |
| Formulation | PBS, pH 7.4, 0.5% BSA, 0.02% Sodium Azide and 50% Glycerol. |
| Isotype | IgG1 |
| Storage Instruction | Store at -20°C for up to 1 year from the date of receipt, and avoid repeat freeze-thaw cycles. |

TARGET INFORMATION

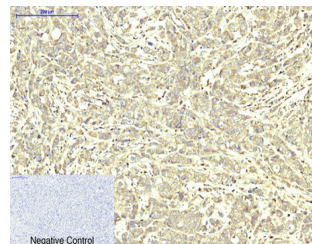
| | |
|---------------------------|--|
| Gene ID | 340273 |
| Gene Symbol | ABCB5 |
| Uniprot ID | ABCB5_HUMAN |
| Immunogen | Synthetic peptide of ABCB5 |
| Region | |
| Specificity | ABCB5 monoclonal antibody (Atp-Binding Cassette Sub-Family B Member 5) binds to endogenous Atp-Binding Cassette Sub-Family B Member 5. |
| Immunogen Sequence | |



Immunofluorescence analysis of Human-liver-cancer tissue. 1, ABCB5 monoclonal antibody (11A2) (red) was diluted at 1:200 (4°C, overnight). 2, Cy3 labeled Secondary antibody was diluted at 1:300 (room temperature, 50min). 3, Picture B: DAPI (blue) 10min. Picture A: Target. Picture B: DAPI. Picture C: merge of A+B



Western blot analysis of 1) HeLa, 2) 293T, diluted at 1:2000. cells nucleus extracted by Minute TM Cytoplasmic and Nuclear Fractionation kit (SC-003, Inventibiotech, MN, USA).



Immunohistochemical analysis of paraffin-embedded Human-breast-cancer tissue. 1, ABCB5 monoclonal antibody (11A2) was diluted at 1:200 (4°C, overnight). 2, Sodium citrate pH 6.0 was used for antibody retrieval (>98°C, 20min). 3, Secondary antibody was diluted at 1:200 (room temperature, 30min). Negative control was used by secondary antibody only.

This product is suitable for in-vitro studies under the RESEARCH USE ONLY [RUO] licence. This product must not be used as for diagnostic or other medical purposes.
St John's Laboratory Ltd, Knowledge Dock Business Centre, University Way, London, E16 2RD | Tel: 0208 223 3081