

Anti-CD1A antibody [9H6] (STJ96970)

STJ96970

GENERAL INFORMATION

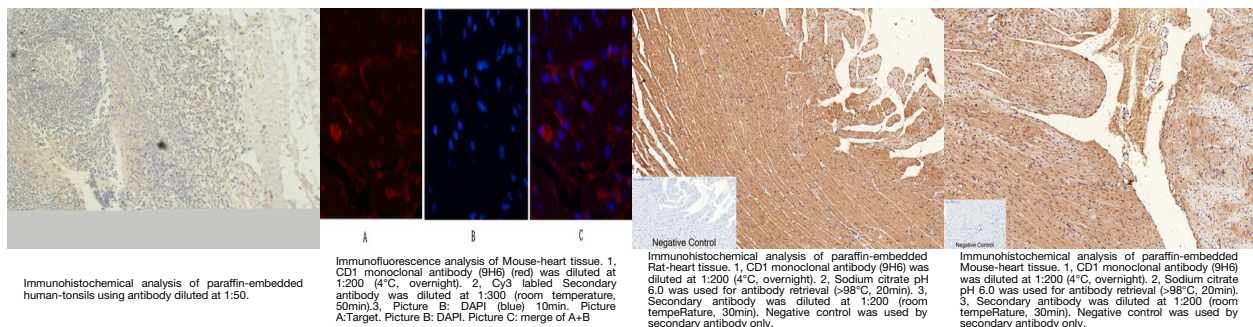
Product Type	Primary antibodies
Short Description	Mouse monoclonal antibody anti-T-Cell Surface Glycoprotein Cd1a is suitable for use in Immunohistochemistry, Immunofluorescence and Immunocytochemistry research applications.
Applications	IHC-P, IF, ICC
Host/Source	Mouse
Reactivity	Human, Mouse, Rat

PRODUCT PROPERTIES

Clonality	Monoclonal
Clone ID	9H6
Concentration	
Conjugation	Unconjugated
Purification	The antibody was isolated from ascitic fluid by immunoaffinity chromatography using antigens coupled to agarose beads.
Dilution Range	WB 500-2000 1:200 IF 1:50-200
Formulation	PBS, pH 7.4, 0.5% BSA, 0.02% Sodium Azide and 50% Glycerol.
Isotype	IgG1
Storage Instruction	Store at -20°C for up to 1 year from the date of receipt, and avoid repeat freeze-thaw cycles.

TARGET INFORMATION

Gene ID	909
Gene Symbol	CD1A
Uniprot ID	CD1A_HUMAN
Immunogen	Synthetic peptide of CD1
Immunogen Region	
Specificity	CD1A monoclonal antibody (T-Cell Surface Glycoprotein Cd1a) binds to endogenous T-Cell Surface Glycoprotein Cd1a.
Immunogen Sequence	



This product is suitable for in-vitro studies under the RESEARCH USE ONLY [RUO] licence. This product must not be used as for diagnostic or other medical purposes.
St John's Laboratory Ltd, Knowledge Dock Business Centre, University Way, London, E16 2RD | Tel: 0208 223 3081