

Anti-KIF7 antibody [3F8] (STJ96965)

STJ96965

GENERAL INFORMATION

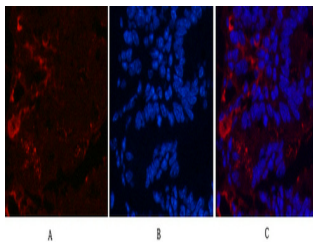
Product Type	Primary antibodies
Short Description	Mouse monoclonal antibody anti-Kinesin-Like Protein Kif7 is suitable for use in Immunohistochemistry, Immunofluorescence and Immunocytochemistry research applications.
Applications	IHC-P, IF, ICC
Host/Source	Mouse
Reactivity	Human, Mouse, Rat

PRODUCT PROPERTIES

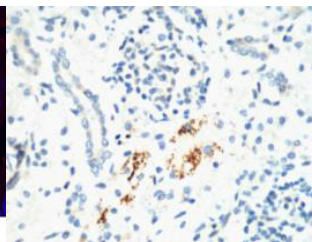
Clonality	Monoclonal
Clone ID	3F8
Concentration	
Conjugation	Unconjugated
Purification	The antibody was isolated from ascitic fluid by immunoaffinity chromatography using antigens coupled to agarose beads.
Dilution Range	WB 500-2000 1:200 IF 1:50-200
Formulation	PBS, pH 7.4, 0.5% BSA, 0.02% Sodium Azide and 50% Glycerol.
Isotype	IgG1
Storage Instruction	Store at -20°C for up to 1 year from the date of receipt, and avoid repeat freeze-thaw cycles.

TARGET INFORMATION

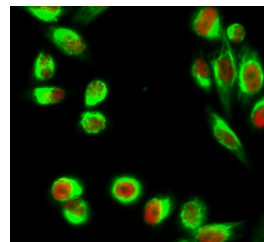
Gene ID	374654
Gene Symbol	KIF7
Uniprot ID	KIF7_HUMAN
Immunogen	Synthetic peptide of Kif 7
Immunogen Region	
Specificity	KIF7 monoclonal antibody (Kinesin-Like Protein Kif7) binds to endogenous Kinesin-Like Protein Kif7.
Immunogen Sequence	



Immunofluorescence analysis of Mouse-colon tissue. 1. Kif 7 monoclonal antibody (3F8) (red) was diluted at 1:200 (4°C, overnight). 2. Cy3 labeled Secondary antibody was diluted at 1:300 (room temperature, 50min). 3. Picture B: DAPI (blue) 10min. Picture A: Target. Picture B: DAPI. Picture C: merge of A+B



IHC staining of Mouse Kidney tissue, diluted at 1:200.



Immunofluorescence analysis of HeLa cell. 1. C/EBP Beta Polyclonal Antibody (red) was diluted at 1:200 (4°C overnight). 2. Goat Anti Rabbit Alexa Fluor 594 Catalog: (NA was diluted at 1:1000 (room temperature, 50min). Goat Anti Mouse Alexa Fluor 488 Catalog: (NA was diluted at 1:1000 (room temperature, 50min).

This product is suitable for in-vitro studies under the RESEARCH USE ONLY [RUO] licence. This product must not be used as for diagnostic or other medical purposes.
St John's Laboratory Ltd, Knowledge Dock Business Centre, University Way, London, E16 2RD | Tel: 0208 223 3081