

Anti-CDX2 antibody [14H6] (STJ96959)

STJ96959

GENERAL INFORMATION

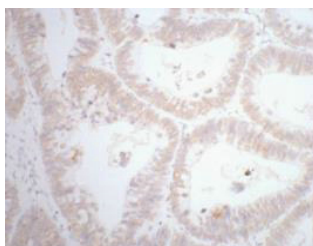
Product Type	Primary antibodies
Short Description	Mouse monoclonal antibody anti-Homeobox Protein Cdx-2 is suitable for use in Western Blot, Immunofluorescence, Immunocytochemistry and Immunohistochemistry research applications.
Applications	WB, IF, ICC, IHC-P
Host/Source	Mouse
Reactivity	Human, Mouse, Rat

PRODUCT PROPERTIES

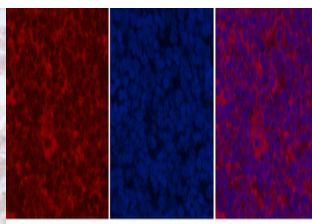
Clonality	Monoclonal
Clone ID	14H6
Concentration	
Conjugation	Unconjugated
Purification	The antibody was isolated from ascitic fluid by immunoaffinity chromatography using antigens coupled to agarose beads.
Dilution Range	WB 1:1000 IHC 1:200 IF 1:200
Formulation	PBS, pH 7.4, 0.5% BSA, 0.02% Sodium Azide and 50% Glycerol.
Isotype	IgG1
Storage Instruction	Store at -20°C for up to 1 year from the date of receipt, and avoid repeat freeze-thaw cycles.

TARGET INFORMATION

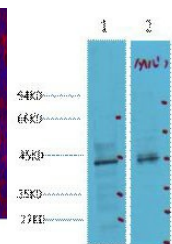
Gene ID	1045
Gene Symbol	CDX2
Uniprot ID	CDX2_HUMAN
Immunogen	Synthetic peptide of CDX2
Immunogen Region	
Specificity	CDX2 monoclonal antibody (Homeobox Protein Cdx-2) binds to endogenous Homeobox Protein Cdx-2.
Immunogen Sequence	



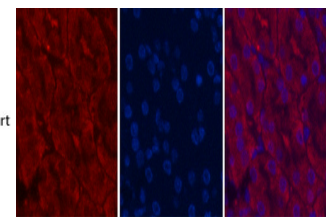
IHC staining of human rectal cancer tissue, diluted at 1:200.



Immunofluorescence analysis of Rat-spleen tissue. 1. CDX2 monoclonal antibody (14H6) (red) was diluted at 1:200 (4°C, overnight). 2. Cy3 labeled Secondary antibody was diluted at 1:300 (room temperature, 50min).3. Picture B: DAPI (blue) 10min. Picture A:Target. Picture B: DAPI. Picture C: merge of A+B



Western blot analysis of 1) 293T. 2) Mouse Heart tissue, diluted at 1:2000. cells nucleus extracted by Minute TM Cytoplasmic and Nuclear Fractionation kit (SC-003, Inventibiotec, MN, USA).



Immunofluorescence analysis of Mouse-kidney tissue. 1. CDX2 monoclonal antibody (14H6) (red) was diluted at 1:200 (4°C, overnight). 2. Cy3 labeled Secondary antibody was diluted at 1:300 (room temperature, 50min).3. Picture B: DAPI (blue) 10min. Picture A:Target. Picture B: DAPI. Picture C: merge of A+B

This product is suitable for in-vitro studies under the RESEARCH USE ONLY [RUO] licence. This product must not be used as for diagnostic or other medical purposes.
St John's Laboratory Ltd, Knowledge Dock Business Centre, University Way, London, E16 2RD | Tel: 0208 223 3081