

Anti-KRT8 antibody [8G8] (STJ96957)

STJ96957

GENERAL INFORMATION

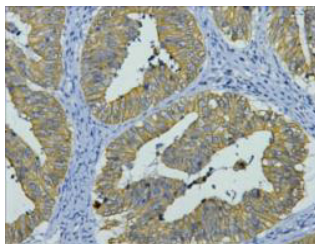
Product Type	Primary antibodies
Short Description	Mouse monoclonal antibody anti-Keratin-Type II Cytoskeletal 8 is suitable for use in Immunofluorescence, Immunocytochemistry, Western Blot and Immunohistochemistry research applications.
Applications	IF, ICC, WB, IHC-P
Host/Source	Mouse
Reactivity	Human, Mouse, Rat

PRODUCT PROPERTIES

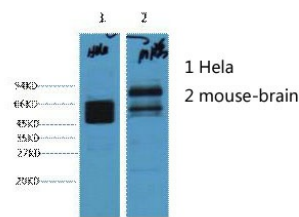
Clonality	Monoclonal
Clone ID	8G8
Concentration	
Conjugation	Unconjugated
Purification	The antibody was isolated from ascitic fluid by immunoaffinity chromatography using antigens coupled to agarose beads.
Dilution Range	IF 1:50-200 WB 1:2000-5000 IHC 1:200
Formulation	PBS, pH 7.4, 0.5% BSA, 0.02% Sodium Azide and 50% Glycerol.
Isotype	IgG1
Storage Instruction	Store at -20°C for up to 1 year from the date of receipt, and avoid repeat freeze-thaw cycles.

TARGET INFORMATION

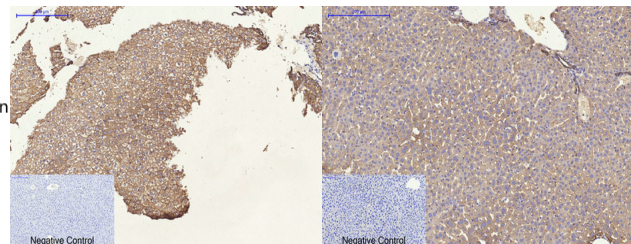
Gene ID	3856
Gene Symbol	KRT8
Uniprot ID	K2C8_HUMAN
Immunogen	Synthetic peptide of CK8
Region	
Specificity	KRT8 monoclonal antibody (Keratin-Type II Cytoskeletal 8) binds to endogenous Keratin-Type II Cytoskeletal 8.
Immunogen Sequence	



IHC staining of human colon cancer tissue, diluted at 1:200.



Western blot analysis of 1) HeLa, 2) Mouse Brain, diluted at 1:4000.



Immunohistochemical analysis of paraffin-embedded Rat-liver tissue. 1, CK8 monoclonal antibody (8G8) was diluted at 1:200 (4°C, overnight). 2, Sodium citrate pH 6.0 was used for antibody retrieval (>98°C, 20min). 3, Secondary antibody was diluted at 1:200 (room temperature, 30min). Negative control was used by secondary antibody only.

Immunohistochemical analysis of paraffin-embedded Mouse-liver tissue. 1, CK8 monoclonal antibody (8G8) was diluted at 1:200 (4°C, overnight). 2, Sodium citrate pH 6.0 was used for antibody retrieval (>98°C, 20min). 3, Secondary antibody was diluted at 1:200 (room temperature, 30min). Negative control was used by secondary antibody only.

This product is suitable for in-vitro studies under the RESEARCH USE ONLY [RUO] licence. This product must not be used as for diagnostic or other medical purposes.
St John's Laboratory Ltd, Knowledge Dock Business Centre, University Way, London, E16 2RD | Tel: 0208 223 3081