

Anti-KRT7 antibody [12D7] (STJ96956)

STJ96956

GENERAL INFORMATION

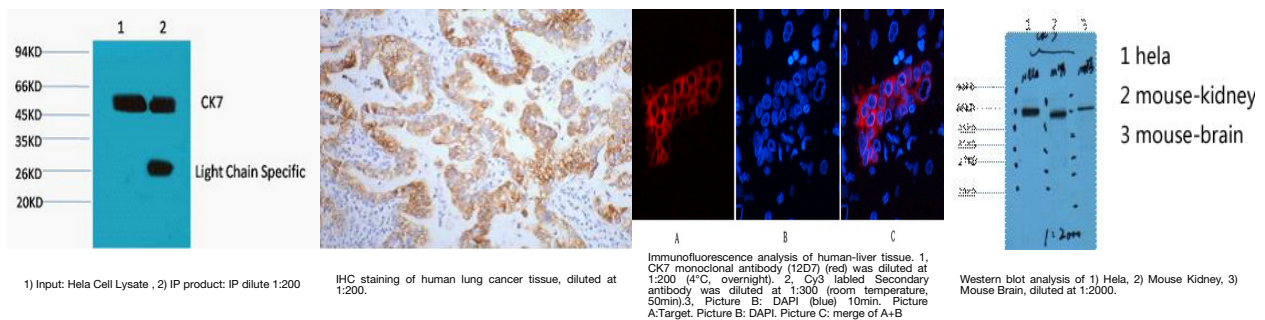
Product Type	Primary antibodies
Short Description	Mouse monoclonal antibody anti-Keratin-Type II Cytoskeletal 7 is suitable for use in Immunofluorescence, Immunocytochemistry, Western Blot, Immunohistochemistry and Immunoprecipitation research applications.
Applications	IF, ICC, WB, IHC-P, IP
Host/Source	Mouse
Reactivity	Human, Mouse, Rat

PRODUCT PROPERTIES

Clonality	Monoclonal
Clone ID	12D7
Concentration	
Conjugation	Unconjugated
Purification	The antibody was isolated from ascitic fluid by immunoaffinity chromatography using antigens coupled to agarose beads.
Dilution Range	IF 1:50-200 WB 1:1000-2000 IHC 1:200 IP 1:200
Formulation	PBS, pH 7.4, 0.5% BSA, 0.02% Sodium Azide and 50% Glycerol.
Isotype	IgG1
Storage Instruction	Store at -20°C for up to 1 year from the date of receipt, and avoid repeat freeze-thaw cycles.

TARGET INFORMATION

Gene ID	3855
Gene Symbol	KRT7
Uniprot ID	K2C7_HUMAN
Immunogen	Synthetic peptide of CK7
Immunogen Region	
Specificity	KRT7 monoclonal antibody (Keratin-Type II Cytoskeletal 7) binds to endogenous Keratin-Type II Cytoskeletal 7.
Immunogen Sequence	



This product is suitable for in-vitro studies under the RESEARCH USE ONLY [RUO] licence. This product must not be used as for diagnostic or other medical purposes.
 St John's Laboratory Ltd, Knowledge Dock Business Centre, University Way, London, E16 2RD | Tel: 0208 223 3081