

Anti-FCER2 antibody [1E9] (STJ96951)

STJ96951

GENERAL INFORMATION

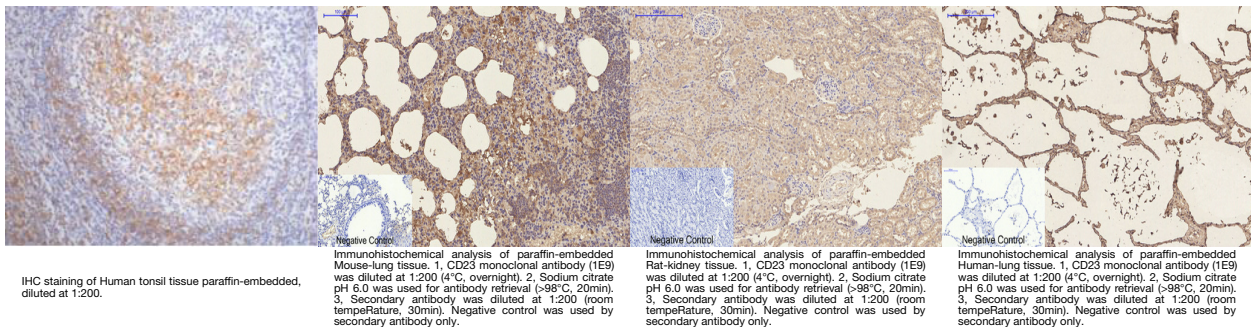
Product Type	Primary antibodies
Short Description	Mouse monoclonal antibody anti-Low Affinity Immunoglobulin Epsilon Fc Receptor is suitable for use in Immunofluorescence, Immunocytochemistry and Immunohistochemistry research applications.
Applications	IF, ICC, IHC-P
Host/Source	Mouse
Reactivity	Human, Mouse, Rat

PRODUCT PROPERTIES

Clonality	Monoclonal
Clone ID	1E9
Concentration	
Conjugation	Unconjugated
Purification	The antibody was isolated from ascitic fluid by immunoaffinity chromatography using antigens coupled to agarose beads.
Dilution	IF 1:50-200
Range	IHC 1:200
Formulation	PBS, pH 7.4, 0.5% BSA, 0.02% Sodium Azide and 50% Glycerol.
Isotype	IgG1
Storage	Store at -20°C for up to 1 year from the date of receipt, and avoid repeat freeze-thaw cycles.
Instruction	

TARGET INFORMATION

Gene ID	2208
Gene Symbol	FCER2
Uniprot ID	FCER2_HUMAN
Immunogen	Synthetic peptide of CD23
Immunogen Region	
Specificity	FCER2 monoclonal antibody (Low Affinity Immunoglobulin Epsilon Fc Receptor) binds to endogenous Low Affinity Immunoglobulin Epsilon Fc Receptor.
Immunogen Sequence	



This product is suitable for in-vitro studies under the RESEARCH USE ONLY [RUO] licence. This product must not be used as for diagnostic or other medical purposes.
 St John's Laboratory Ltd, Knowledge Dock Business Centre, University Way, London, E16 2RD | Tel: 0208 223 3081