

## Anti-MS4A1 antibody [2F4] (STJ96950)

STJ96950

### GENERAL INFORMATION

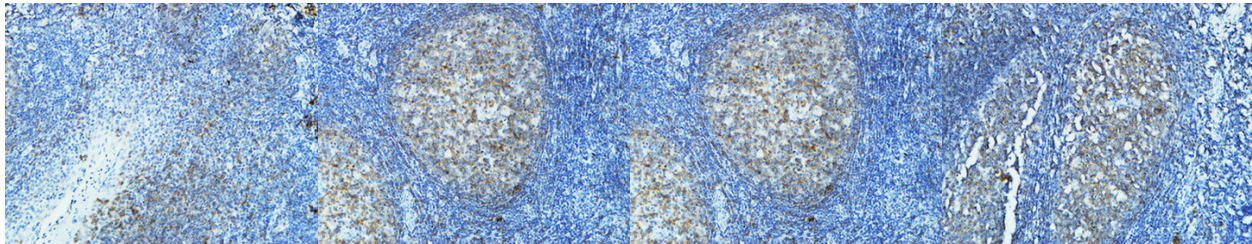
<b>Product Type</b>	Primary antibodies
<b>Short Description</b>	Mouse monoclonal antibody anti-B-Lymphocyte antigen Cd20 is suitable for use in Immunohistochemistry and Immunofluorescence research applications.
<b>Applications</b>	IHC-P, IF-P
<b>Host/Source</b>	Mouse
<b>Reactivity</b>	Human, Mouse, Rat

### PRODUCT PROPERTIES

<b>Clonality</b>	Monoclonal
<b>Clone ID</b>	2F4
<b>Concentration</b>	
<b>Conjugation</b>	Unconjugated
<b>Purification</b>	The antibody was isolated from ascitic fluid by immunoaffinity chromatography using antigens coupled to agarose beads.
<b>Dilution Range</b>	IHC 1:200
<b>Formulation</b>	PBS, pH 7.4, 0.5% BSA, 0.02% Sodium Azide and 50% Glycerol.
<b>Isotype</b>	IgG1
<b>Storage Instruction</b>	Store at -20°C for up to 1 year from the date of receipt, and avoid repeat freeze-thaw cycles.

### TARGET INFORMATION

<b>Gene ID</b>	931
<b>Gene Symbol</b>	MS4A1
<b>Uniprot ID</b>	CD20_HUMAN
<b>Immunogen</b>	Synthetic peptide of CD20
<b>Immunogen Region</b>	
<b>Specificity</b>	MS4A1 monoclonal antibody (B-Lymphocyte Antigen Cd20) binds to endogenous B-Lymphocyte Antigen Cd20.
<b>Immunogen Sequence</b>	



Immunohistochemical analysis of paraffin-embedded Human Amygdala. 1, Antibody was diluted at 1:400 (4°C overnight). 2, High-pressure and temperature EDTA, pH8.0 was used for antigen retrieval. 3, Secondary antibody was diluted at 1:200 (room temperature, 30min).

Immunohistochemical analysis of paraffin-embedded Human Amygdala. 1, Antibody was diluted at 1:400 (4°C overnight). 2, High-pressure and temperature EDTA, pH8.0 was used for antigen retrieval. 3, Secondary antibody was diluted at 1:200 (room temperature, 30min).

Immunohistochemical analysis of paraffin-embedded Human Amygdala. 1, Antibody was diluted at 1:400 (4°C overnight). 2, High-pressure and temperature EDTA, pH8.0 was used for antigen retrieval. 3, Secondary antibody was diluted at 1:200 (room temperature, 30min).

Immunohistochemical analysis of paraffin-embedded Human Amygdala. 1, Antibody was diluted at 1:200 (4°C overnight). 2, High-pressure and temperature EDTA, pH8.0 was used for antigen retrieval. 3, Secondary antibody was diluted at 1:200 (room temperature, 30min).

This product is suitable for in-vitro studies under the RESEARCH USE ONLY [RUO] licence. This product must not be used as for diagnostic or other medical purposes.  
 St John's Laboratory Ltd, Knowledge Dock Business Centre, University Way, London, E16 2RD | Tel: 0208 223 3081