

## Anti-AMACR antibody [4A12] (STJ96949)

STJ96949

### GENERAL INFORMATION

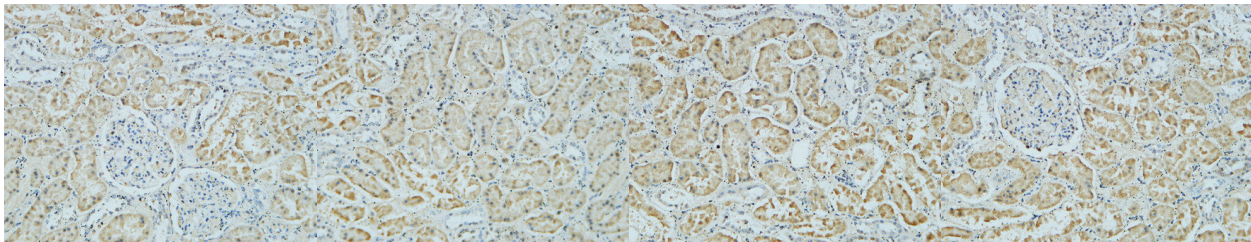
<b>Product Type</b>	Primary antibodies
<b>Short Description</b>	Mouse monoclonal antibody anti-Alpha-Methylacyl-Coa Racemase is suitable for use in Western Blot, Immunofluorescence, Immunocytochemistry and Immunohistochemistry research applications.
<b>Applications</b>	WB, IF, ICC, IHC-P
<b>Host/Source</b>	Mouse
<b>Reactivity</b>	Human, Mouse, Rat

### PRODUCT PROPERTIES

<b>Clonality</b>	Monoclonal
<b>Clone ID</b>	4A12
<b>Concentration</b>	
<b>Conjugation</b>	Unconjugated
<b>Purification</b>	The antibody was isolated from ascitic fluid by immunoaffinity chromatography using antigens coupled to agarose beads.
<b>Dilution Range</b>	WB 1:1000 IHC 1:200 IF 1:200
<b>Formulation</b>	PBS, pH 7.4, 0.5% BSA, 0.02% Sodium Azide and 50% Glycerol.
<b>Isotype</b>	IgG1
<b>Storage Instruction</b>	Store at -20°C for up to 1 year from the date of receipt, and avoid repeat freeze-thaw cycles.

### TARGET INFORMATION

<b>Gene ID</b>	23600
<b>Gene Symbol</b>	AMACR
<b>Uniprot ID</b>	AMACR_HUMAN
<b>Immunogen</b>	Synthetic peptide of AMACR
<b>Immunogen Region</b>	
<b>Specificity</b>	AMACR monoclonal antibody (Alpha-Methylacyl-Coa Racemase) binds to endogenous Alpha-Methylacyl-Coa Racemase.
<b>Immunogen Sequence</b>	



Immunohistochemical analysis of paraffin-embedded Human Right kidney. 1. Antibody was diluted at 1:200 (4°C overnight). 2. High-pressure and temperature EDTA, pH8.0 was used for antigen retrieval. 3. Secondary antibody was diluted at 1:200 (room temperature, 30min).

Immunohistochemical analysis of paraffin-embedded Human Right kidney. 1. Antibody was diluted at 1:200 (4°C overnight). 2. High-pressure and temperature EDTA, pH8.0 was used for antigen retrieval. 3. Secondary antibody was diluted at 1:200 (room temperature, 30min).

Immunohistochemical analysis of paraffin-embedded Human Right kidney. 1. Antibody was diluted at 1:200 (4°C overnight). 2. High-pressure and temperature EDTA, pH8.0 was used for antigen retrieval. 3. Secondary antibody was diluted at 1:200 (room temperature, 30min).

Immunohistochemical analysis of paraffin-embedded Human Right kidney. 1. Antibody was diluted at 1:200 (4°C overnight). 2. High-pressure and temperature EDTA, pH8.0 was used for antigen retrieval. 3. Secondary antibody was diluted at 1:200 (room temperature, 30min).

This product is suitable for in-vitro studies under the RESEARCH USE ONLY [RUO] licence. This product must not be used as for diagnostic or other medical purposes.  
St John's Laboratory Ltd, Knowledge Dock Business Centre, University Way, London, E16 2RD | Tel: 0208 223 3081