

Anti-LMNB1 antibody [7C11] (STJ96938)

STJ96938

GENERAL INFORMATION

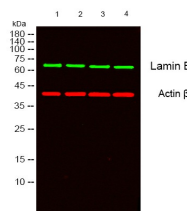
Product Type	Primary antibodies
Short Description	Mouse monoclonal antibody anti-Lamin-B1 is suitable for use in Western Blot, Immunohistochemistry, Immunofluorescence, Immunocytochemistry and Immunoprecipitation research applications.
Applications	WB, IHC-P, IF, ICC, IP
Host/Source	Mouse
Reactivity	Human, Rat, Mouse

PRODUCT PROPERTIES

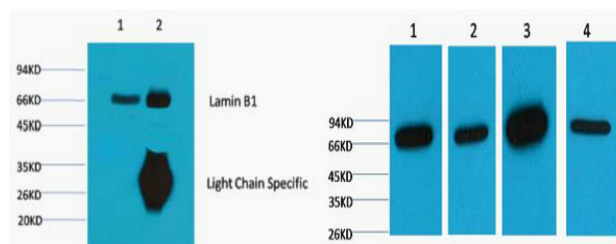
Clonality	Monoclonal
Clone ID	7C11
Concentration	Unconjugated
Purification	The antibody was isolated from ascitic fluid by immunoaffinity chromatography using antigens coupled to agarose beads.
Dilution Range	WB 1:2000-5000 IP 1:200 IF 1:200 IHC 1:50-300
Formulation	PBS, pH 7.4, 0.5% BSA, 0.02% Sodium Azide and 50% Glycerol.
Isotype	IgG1
Storage Instruction	Store at -20°C for up to 1 year from the date of receipt, and avoid repeat freeze-thaw cycles.

TARGET INFORMATION

Gene ID	4001
Gene Symbol	LMNB1
Uniprot ID	LMNB1_HUMAN
Immunogen	Recombinant Protein of Lamin-B1
Immunogen Region	
Specificity	LMNB1 monoclonal antibody (Lamin-B1) binds to endogenous Lamin-B1.
Immunogen Sequence	

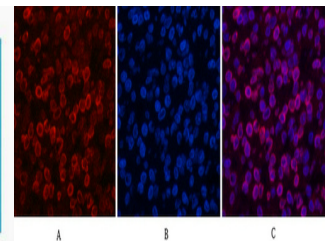


Western blot analysis of lysates from 1) HepG2, 2) 293T, 3) Mouse Brain Tissue, 4) Rat Brain Tissue cells. (Green) primary antibody was diluted at 1:1000, 4°C over night, secondary antibody (cat: NA) was diluted at 1:10000, 37°C 1hour. (Red) Actin Beta Polyclonal Antibody (cat: STJ91464) antibody was diluted at 1:5000 as loading control, 4°C over night, secondary antibody (cat: NA) was diluted at 1:10000, 37°C 1hour.



1) Input: Mouse Brain Tissue Lysate, 2) IP product: IP dilute 1:200

Western blot analysis of 1) HepG2, 2) 293T, 3) Mouse Brain Tissue, 4) Rat Brain Tissue, diluted at 1:5000. cells nucleus extracted by Minute™ Cytoplasmic and Nuclear Fractionation kit (SC-003, Inventiotech, MN, USA).



Immunofluorescence analysis of Human-lung-cancer tissue. 1. Lamin B1 monoclonal antibody (7C11) (red) was diluted at 1:200 (4°C, overnight). 2. Cy3 labeled Secondary antibody was diluted at 1:300 (room temperature, 50min). 3. Picture B: DAPI (blue) 10min. Picture A: Target. Picture B: DAPI. Picture C: merge of A+B

This product is suitable for in-vitro studies under the RESEARCH USE ONLY [RUO] licence. This product must not be used as for diagnostic or other medical purposes.
St John's Laboratory Ltd, Knowledge Dock Business Centre, University Way, London, E16 2RD | Tel: 0208 223 3081