

## Anti-TUBB3 antibody (C-Term) [5G3] (STJ96932)

STJ96932

### GENERAL INFORMATION

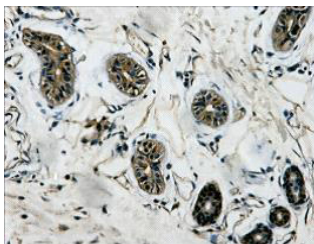
|                          |   |
|--------------------------|---|
| <b>Product Type</b>      | Primary antibodies  |
| <b>Short Description</b> | Mouse monoclonal antibody anti-Tubulin Beta-3 Chain (C-Term) is suitable for use in Western Blot, Immunofluorescence, Immunocytochemistry and Immunohistochemistry research applications. |
| <b>Applications</b>      | WB, IF, ICC, IHC-P  |
| <b>Host/Source</b>       | Mouse   |
| <b>Reactivity</b>        | Human, Rat, Mouse, Simian, Dog, Chicken, Hamster, Rabbit, Sheep, Insects, Yeast, Fish   |

### PRODUCT PROPERTIES

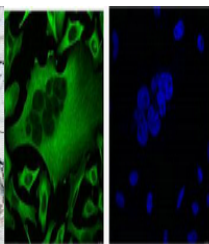
|                            |  |
|----------------------------|--|
| <b>Clonality</b>           | Monoclonal   |
| <b>Clone ID</b>            | 5G3  |
| <b>Concentration</b>       | 1 mg/mL  |
| <b>Conjugation</b>         | Unconjugated   |
| <b>Purification</b>        | The antibody was isolated from ascitic fluid by immunoaffinity chromatography using antigens coupled to agarose beads. |
| <b>Dilution Range</b>      | WB 1:5000<br>IHC 1:200<br>IF 1:200   |
| <b>Formulation</b>         | PBS, pH 7.4, 0.5% BSA, 0.02% Sodium Azide and 50% Glycerol.  |
| <b>Isotype</b>             | IgG1   |
| <b>Storage Instruction</b> | Store at -20°C for up to 1 year from the date of receipt, and avoid repeat freeze-thaw cycles.                         |

### TARGET INFORMATION

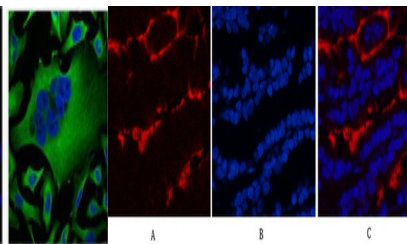
|                           |  |
|---------------------------|--|
| <b>Gene ID</b>            | 10381  |
| <b>Gene Symbol</b>        | TUBB3  |
| <b>Uniprot ID</b>         | TBB3_HUMAN   |
| <b>Immunogen</b>          | Synthetic peptide of Beta-Tubulin  |
| <b>Immunogen Region</b>   | C-Term   |
| <b>Specificity</b>        | TUBB3 monoclonal antibody (Tubulin Beta-3 Chain) binds to endogenous Tubulin Beta-3 Chain at the amino acid region C-Term. |
| <b>Immunogen Sequence</b> |  |



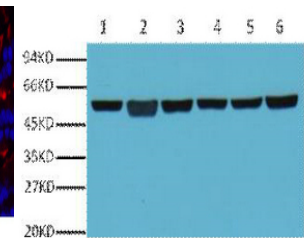
IHC Staining of Human colon tissue, diluted at 1:200.



IF analysis of HeLa with Beta-Tubulin monoclonal antibody (Left) and DAPI (Right) diluted at 1:100.



Immunofluorescence analysis of Mouse-lung tissue. 1. Beta-Tubulin monoclonal antibody [5G3] (red) was diluted at 1:200 (4°C, overnight). 2. Cy3 labeled Secondary antibody was diluted at 1:300 (room temperature, 50min). 3. Picture B: DAPI (blue) 10min. Picture A: Target. Picture B: DAPI. Picture C: merge of A+B



Western blot analysis of A549 (1), Rat brain (2), Mouse brain (3), Chicken lung (4) and Rabbit testis (5), Sheep muscle (6), diluted at 1:5000.

This product is suitable for in-vitro studies under the RESEARCH USE ONLY [RUO] licence. This product must not be used as for diagnostic or other medical purposes.  
St John's Laboratory Ltd, Knowledge Dock Business Centre, University Way, London, E16 2RD | Tel: 0208 223 3081