

Anti-His-Tag antibody [4E6] (STJ96906)

STJ96906

GENERAL INFORMATION

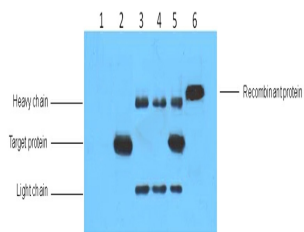
Product Type	Primary antibodies
Short Description	Mouse monoclonal antibody anti-His-Tag-Tag is suitable for use in Western Blot, Immunoprecipitation, Immunofluorescence and Immunocytochemistry research applications.
Applications	WB, IP, IF, ICC
Host/Source	Mouse
Reactivity	Tag

PRODUCT PROPERTIES

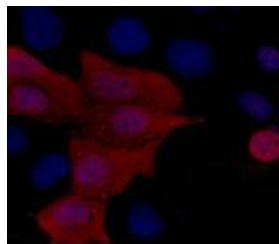
Clonality	Monoclonal
Clone ID	4E6
Concentration	
Conjugation	Unconjugated
Purification	The antibody was isolated from ascitic fluid by immunoaffinity chromatography using antigens coupled to agarose beads.
Dilution Range	WB 1:3000 IP 1:200 IF 1:1000
Formulation	PBS, pH 7.4, 0.5% BSA, 0.02% Sodium Azide and 50% Glycerol.
Isotype	IgG1
Storage Instruction	Store at -20°C for up to 1 year from the date of receipt, and avoid repeat freeze-thaw cycles.

TARGET INFORMATION

Gene ID	
Gene Symbol	
Uniprot ID	
Immunogen	Synthetic peptide:HHHHHH conjugated to KLH.
Immunogen Region	
Specificity	The antibody detects C-terminal, internal, and N-terminal His-tag fusion proteins.
Immunogen Sequence	



IP antibody use: 5µg His Mouse IgG1 per ml Lysate, WB 1:3000. 1. untransfected 293 cell lysate, 2. transfected 293 cell lysate with His-tag fusion protein, 3. IP (untransfected 293+anti-His mAb+ Protein G agarose) , 4. IP (transfected 293+ normal Mouse IgG+Protein G agarose) , 5. IP (transfected 293+anti-His mAb+ Protein G agarose) , 6. Recombinant protein (E.coli)



IF analysis of 293 cells transfected with a His-tag protein, 1:1000 dilution (blue DAPI, red anti-His)

This product is suitable for in-vitro studies under the RESEARCH USE ONLY [RUO] licence. This product must not be used as for diagnostic or other medical purposes.
St John's Laboratory Ltd, Knowledge Dock Business Centre, University Way, London, E16 2RD | Tel: 0208 223 3081