

Anti-CSF3R antibody (321-370 Internal) (STJ96892)

STJ96892

GENERAL INFORMATION

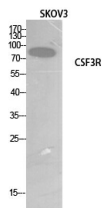
Product Type	Primary antibodies
Short Description	Rabbit polyclonal antibody anti-Granulocyte Colony-Stimulating Factor Receptor (321-370 Internal) is suitable for use in Western Blot and ELISA research applications.
Applications	WB, ELISA
Host/Source	Rabbit
Reactivity	Human, Rat, Mouse

PRODUCT PROPERTIES

Clonality	Polyclonal
Clone ID	
Concentration	1 mg/mL
Conjugation	Unconjugated
Purification	The antibody was affinity-purified from rabbit anti-serum by affinity-chromatography.
Dilution Range	WB 1:500-1:2000 ELISA 1:20000
Formulation	PBS, 50% Glycerol, 0.5% BSA and 0.02% Sodium Azide.
Isotype	IgG
Storage	Store at -20°C for up to 1 year from the date of receipt, and avoid repeat freeze-thaw cycles.
Instruction	

TARGET INFORMATION

Gene ID	1441
Gene Symbol	CSF3R
Uniprot ID	CSF3R_HUMAN
Immunogen	The antiserum was produced against synthesized peptide derived from the Internal region of human CSF3R at amino acid range 321-370
Immunogen Region	321-370 Internal
Specificity	CSF3R polyclonal antibody (Granulocyte Colony-Stimulating Factor Receptor) binds to endogenous Granulocyte Colony-Stimulating Factor Receptor at the amino acid region 321-370 Internal.
Immunogen Sequence	



Western blot analysis of SKOV3 cells using G-CSFR Polyclonal Antibody. Secondary antibody was diluted at 1:20000