

Anti-MAG antibody (501-550 C-Term) (STJ96882)

STJ96882

GENERAL INFORMATION

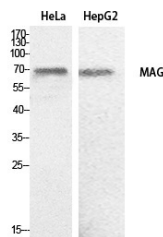
| | |
|--------------------------|--|
| Product Type | Primary antibodies |
| Short Description | Rabbit polyclonal antibody anti-Myelin-Associated Glycoprotein (501-550 C-Term) is suitable for use in Western Blot and ELISA research applications. |
| Applications | WB, ELISA |
| Host/Source | Rabbit |
| Reactivity | Human, Mouse, Rat |

PRODUCT PROPERTIES

| | |
|-----------------------|--|
| Clonality | Polyclonal |
| Clone ID | |
| Concentration | 1 mg/mL |
| Conjugation | Unconjugated |
| Purification | The antibody was affinity-purified from rabbit anti-serum by affinity-chromatography. |
| Dilution Range | WB 1:500-1:2000 ELISA 1:20000 |
| Formulation | PBS, 50% Glycerol, 0.5% BSA and 0.02% Sodium Azide. |
| Isotype | IgG |
| Storage | Store at -20°C for up to 1 year from the date of receipt, and avoid repeat freeze-thaw cycles. |
| Instruction | |

TARGET INFORMATION

| | |
|---------------------------|--|
| Gene ID | 4099 |
| Gene Symbol | MAG |
| Uniprot ID | MAG_HUMAN |
| Immunogen | The antiserum was produced against synthesized peptide derived from the C-terminal region of human MAG at amino acid range 501-550 |
| Immunogen Region | 501-550 C-Term |
| Specificity | MAG polyclonal antibody (Myelin-Associated Glycoprotein) binds to endogenous Myelin-Associated Glycoprotein at the amino acid region 501-550 C-Term. |
| Immunogen Sequence | |



Western blot analysis of HeLa, HepG2 cells using MAG Polyclonal Antibody. Secondary antibody was diluted at 1:20000