

Anti-Histone H2A antibody (Internal) (STJ96865)

STJ96865

GENERAL INFORMATION

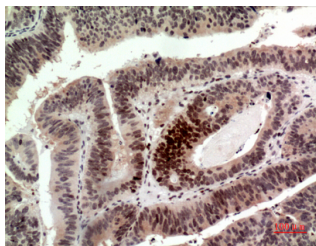
Product Type	Primary antibodies
Short Description	Rabbit polyclonal antibody anti-Histone H2a Type 1 (Internal) is suitable for use in Western Blot, Immunohistochemistry, Immunofluorescence and ELISA research applications.
Applications	WB, IHC-P, IF-P, ELISA
Host/Source	Rabbit
Reactivity	Human, Mouse, Rat

PRODUCT PROPERTIES

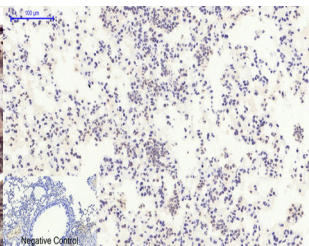
Clonality	Polyclonal
Clone ID	
Concentration	1 mg/mL
Conjugation	Unconjugated
Purification	The antibody was affinity-purified from rabbit anti-serum by affinity-chromatography.
Dilution Range	WB 1:500-1:2000 IHC 1:100-1:300 ELISA 1:20000
Formulation	PBS, 50% Glycerol, 0.5% BSA and 0.02% Sodium Azide.
Isotype	IgG
Storage Instruction	Store at -20°C for up to 1 year from the date of receipt, and avoid repeat freeze-thaw cycles.

TARGET INFORMATION

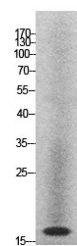
Gene ID	8329/8330/8332/8336/8969
Gene Symbol	H2AC11.H2AC13.H2AC15.H2AC16.H2AC17
Uniprot ID	H2A1_HUMAN
Immunogen	Synthesized peptide derived from the Internal region of human Histone H2A.
Immunogen Region	Internal
Specificity	Histone H2A polyclonal antibody (Histone H2a Type 1) binds to endogenous Histone H2a Type 1 at the amino acid region Internal.
Immunogen Sequence	



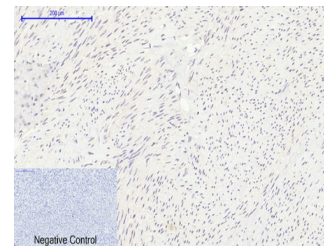
Immunohistochemical analysis of paraffin-embedded human colon cancer, antibody was diluted at 1:100



Immunohistochemical analysis of paraffin-embedded Mouse-lung tissue. 1. Histone H2A Polyclonal Antibody was diluted at 1:200 (4°C, overnight). 2. Sodium citrate pH 6.0 was used for antibody retrieval (>98°C, 20min). 3. Secondary antibody was diluted at 1:200 (room temperature, 30min). Negative control was used by secondary antibody only.



Western blot analysis of HeLa cells using Histone H2A Polyclonal Antibody. Secondary antibody was diluted at 1:20000 cells nucleus extracted by Minute™ Cytoplasmic and Nuclear Fractionation kit (SC-003, Invitibiotec, MN, USA).



Immunohistochemical analysis of paraffin-embedded Human-uterus tissue. 1. Histone H2A Polyclonal Antibody was diluted at 1:200 (4°C, overnight). 2. Sodium citrate pH 6.0 was used for antibody retrieval (>98°C, 20min). 3. Secondary antibody was diluted at 1:200 (room temperature, 30min). Negative control was used by secondary antibody only.

This product is suitable for in-vitro studies under the RESEARCH USE ONLY [RUO] licence. This product must not be used as for diagnostic or other medical purposes.

St John's Laboratory Ltd, Knowledge Dock Business Centre, University Way, London, E16 2RD | Tel: 0208 223 3081